






Group:	AVI160	Notes:
Form:	SP1029-AVI160	Refer to SP1029-DWG for major component drawing.
Date:	May 15, 2013	Refer to TSB-3024 for hardware kit breakdown.
File:	Alternator Parts List Section	

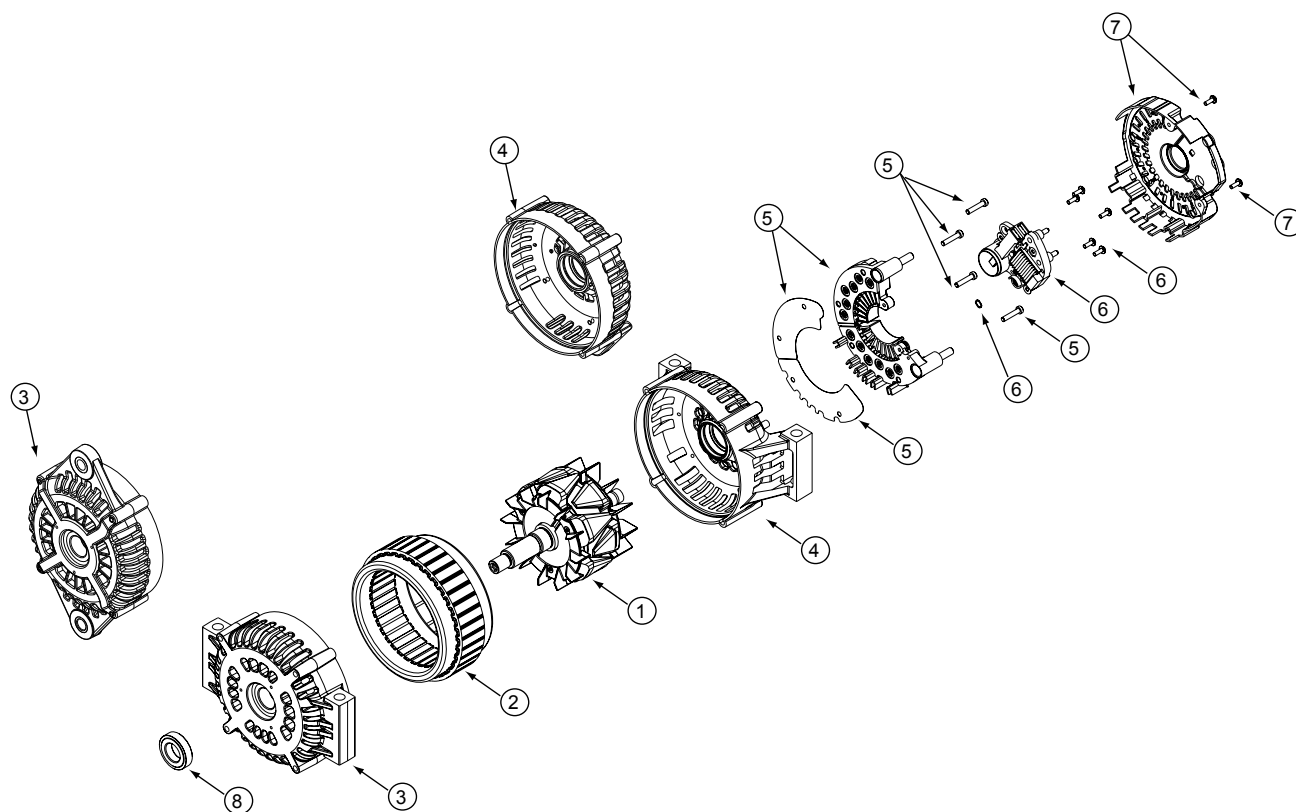
Component View	Rotor	Stator	Front Housing & bearing,	Rear Housing & O-ring	Rectifier w/mtg. screws
					
Model	1	2	3	4	5
AVI160P2003	A020520295S	A023520650S	A014520297S	A011520298S	A051520700S
AVI160P2003N	A020520295S	A023520650S	A014520297S	A011520298S	A051520700S
AVI160P2007	A020520704S	A023105699S	A014520297S	A011520298S	A051520308S
AVI160P2007N	A020520704S	A023105699S	A014520297S	A011520298S	A051520308S
AVI160P2009	A020520295S	A023520650S	A014520297S	A011520298S	A051520700S
AVI160P2010	A020106189S	A023106191S	A014520297S	A011520298S	A051106192S
AVI160J2004	A020520295S	A023520650S	A014520337S	A011520334S	A051520700S
AVI160J2008	A020520704S	A023105699S	A014520337S	A011520334S	A051520308S
AVI160J2011	A020106189S	A023106191S	A014520337S	A011520334S	A051106192S

Component View	Regulator w/brushes	Cover Kit	Pulley Spacer	Hardware Kit
				
Model	6	7	8	9
AVI160P2003	R007520316S	A038520321S	A095520307S	K212105992S
AVI160P2003N	R007520316S	A038520321S	A095520307S	K212105992S
AVI160P2007	R007520316S	A038520321S	A095520307S	K212105992S
AVI160P2007N	R007520316S	A038520321S	A095520307S	K212105992S
AVI160P2009	R007520316S	A038520321S	A095520307S	K212105992S
AVI160P2010	R007520316S	A038520321S	A095520307S	K212105992S
AVI160J2004	R007520316S	A038520321S	A095520307S	K212105992S
AVI160J2008	R007520316S	A038520321S	A095520307S	K212105992S
AVI160J2011	R007520316S	A038520321S	A095520307S	K212105992S

Important: The information contained in this bulletin is intended for use by trained, professional technicians who have the proper tools, equipment, and training to perform the required maintenance described above. This information is NOT intended for 'do-it-yourselfers', and you should not assume that this information applies to your equipment. If you have any questions regarding this information please visit our website at www.prestolite.com, or contact our technical service department at:

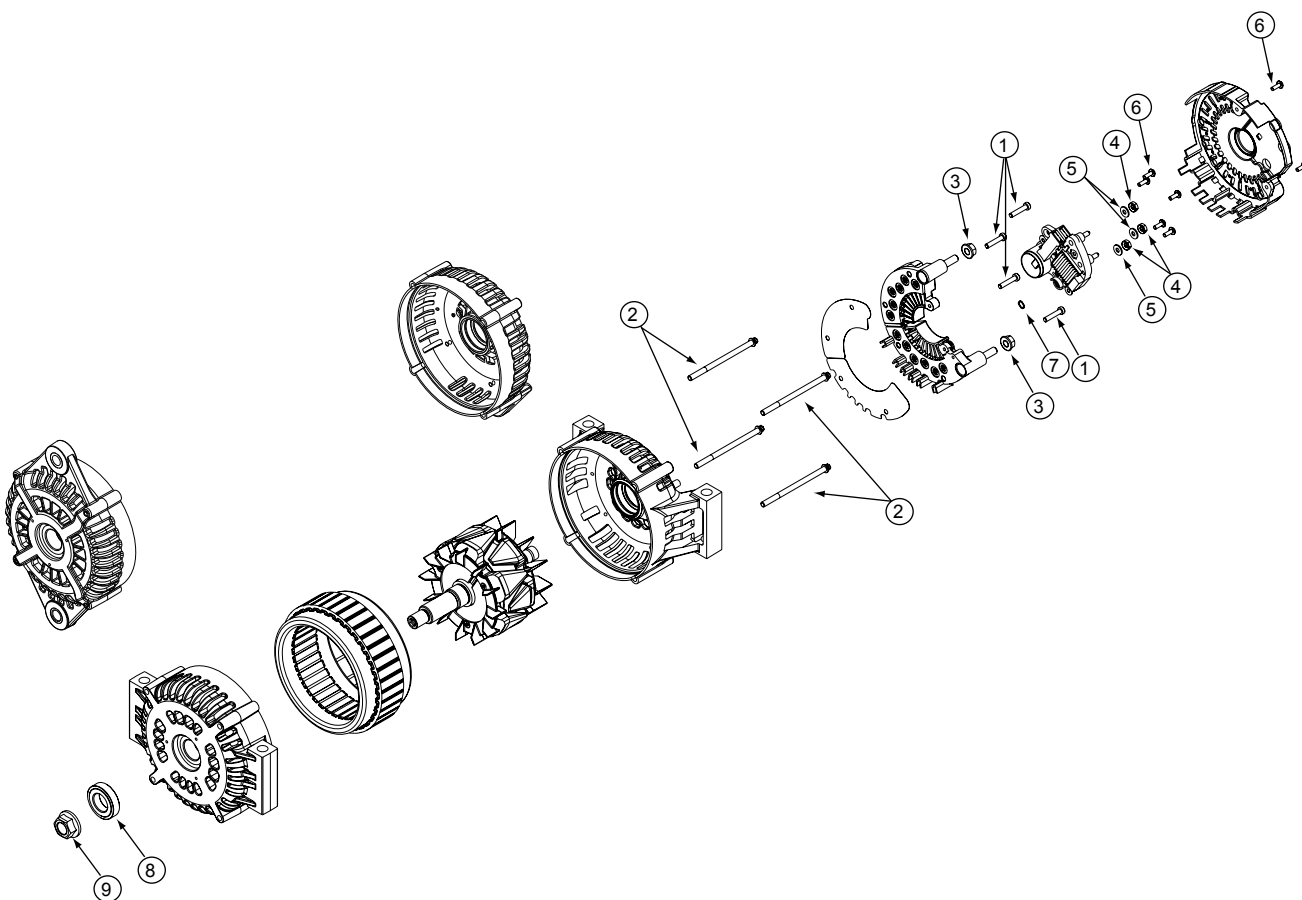
Group:	AVI160T	Notes:
Form:	SP1029-DWG	Refer to SP1029-AVI 160J-P for parts breakdown.
Date:	December 22, 2010	Refer to TSB-3024 for hardware kit breakdown.
File:	Alternator Parts List Section	

AVI 160J-P Major Service Components



Important: The information contained in this bulletin is intended for use by trained, professional technicians who have the proper tools, equipment, and training to perform the required maintenance described above. This information is NOT intended for 'do-it-yourselfers', and you should not assume that this information applies to your equipment. If you have any questions regarding this information please visit our website at www.prestolite.com, or contact our technical service department at:

Source: Leece-Neville Heavy Duty Systems Division - Arcade, NY USA
Date: February 3, 2011
Bulletin No: TSB-3024
Models: AVI160J & P Mount
Subject: Hardware Kit for AVI160J-P-Series Alternators K212105992S



Important: The information contained in this bulletin is intended for use by trained, professional technicians who have the proper tools, equipment, and training to perform the required maintenance described above. This information is NOT intended for 'do-it-yourselfers', and you should not assume that this information applies to your equipment. If you have any questions regarding this information please visit our website at www.prestolite.com, or contact our technical service department at:

Date: February 3, 2011

Bulletin No: TSB-3024

Key	QTY	DESCRIPTION	WHERE USED
1	4	SCREW, M5	RECTIFIER ATTACHING SCREWS
2	4	T-BOLTS	THROUGH BOLTS
3	2	NUT,M8	POS/NEG TERMINAL HARDWARE
4	3	NUT M5	S / L & W TERMINAL HARDWARE
5	3	WASHER #10	S / L & W TERMINAL HARDWARE
6	7	SCREW M4	REGULATOR/ REAR COVER ATTACHING HARDWARE
7	1	WAVY WASHER	CONNECT BETWEEN REGULATOR AND REAR HSG
8	1	SPACER	PULLEY SPACER
9	1	PULLEY NUT	ATTACHES PULLEY TO ALTERNATOR

Important: The information contained in this bulletin is intended for use by trained, professional technicians who have the proper tools, equipment, and training to perform the required maintenance described above. This information is NOT intended for 'do-it-yourselfers', and you should not assume that this information applies to your equipment. If you have any questions regarding this information please visit our website at www.prestolite.com, or contact our technical service department at: