













Group:	M125R	Notes:
Form:	SP1028-M125	Refer to SP1028 -DWG for major component drawing.
Date:	April 27, 2012	Refer to TSB-3023 for hardware kit breakdown.
File:	Starter Motor Parts List Section	


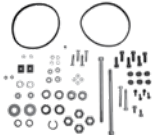
Component View	Pinion Kit	Flange Kit (Includes bearing)	Solenoid	Brush Holder Assembly w/o brushes	C.E. Housing Assembly	Shift Hsg. Lever Arm Kit
						
Model	1	2	3	4	5	6
M125R2600SE	K183520170S	M014520219S	S214104463S	M007105863S	M012105498S	K072105974S
M125R2632SE	K183520252S	M014520258S	S214104463S	M007105863S	M012105498S	K072105974S
M125R2634SE	K183105797S	M014105799S	S214104463S	M007105863S	M012105498S	K072105974S

Component View	Output Shaft	Drive Clutch Assembly	Shift lever housing	Armature w/ bearing	Brushes Kit	Soft Start Relay w Leads
						
Model	7	8	9	9	10	11
M125R2600SE	M364520167S	M029520220S	M165520213S	M002520227S	K185103966S	S214105701S
M125R2632SE	M364520167S	M029520220S	M165520213S	M002520227S	K185103966S	S214105701S
M125R2634SE	M364520167S	M029520220S	M165520213S	M002520227S	K185103966S	S214105701S

Important: The information contained in this bulletin is intended for use by trained, professional technicians who have the proper tools, equipment, and training to perform the required maintenance described above. This information is NOT intended for 'do-it-yourselfers', and you should not assume that this information applies to your equipment. If you have any questions regarding this information please visit our website at www.prestolite.com, or contact our technical service department at:

Group:	M125R	Notes:
Form:	SP1028-M125	Refer to SP1028 -DWG for major component drawing. Refer to TSB-3023 for hardware kit breakdown.
Date:	April 27, 2012	
File:	Starter Motor Parts List Section	

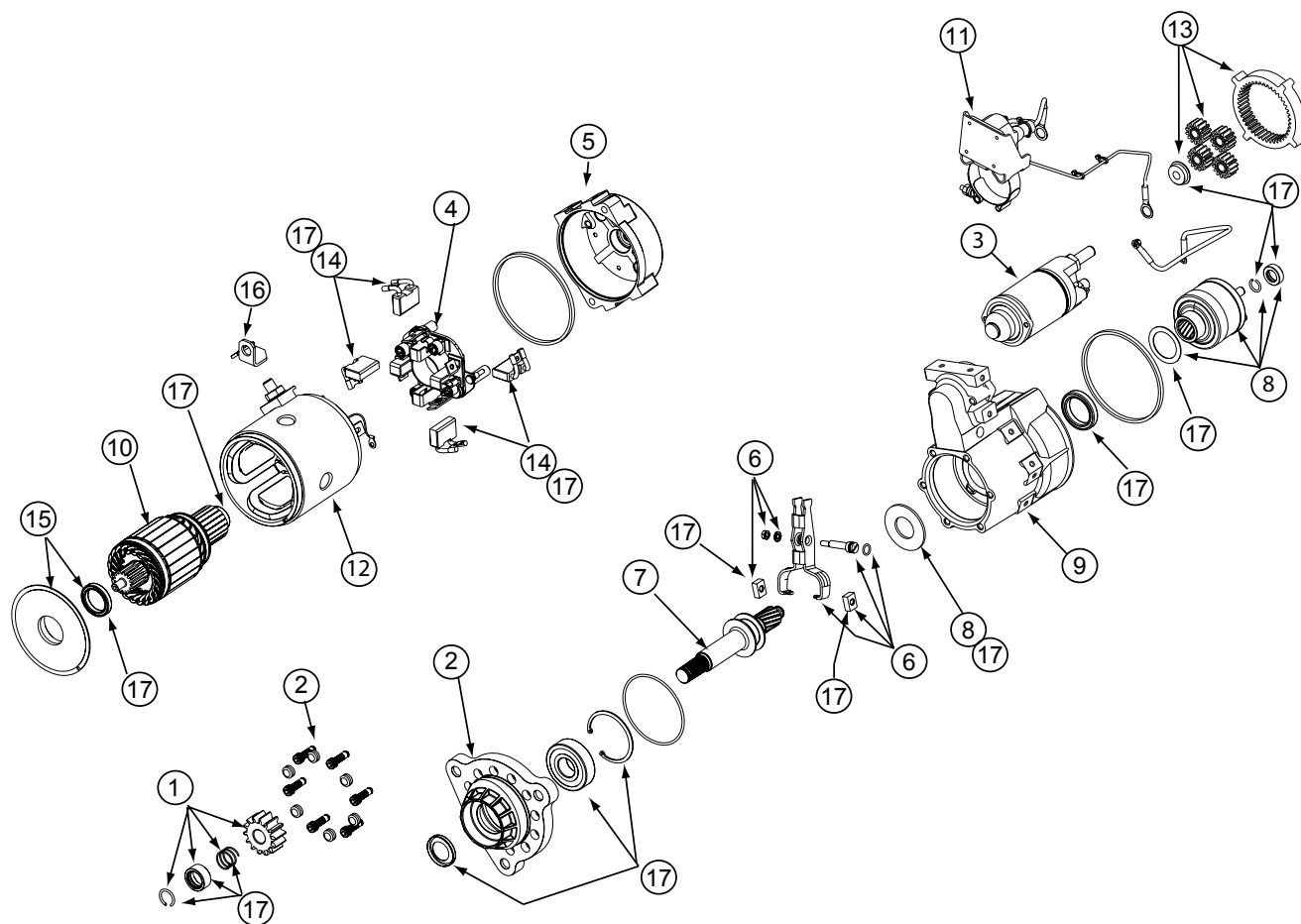
Component View	Field & Frame Assembly	Gearbox Overhaul Kit	Brushes Kit	Intermediate Plate w/ bearing	Jumper	Overhaul Kit
						
Model	12	13	14	15	16	17
M125R2600SE	M016104423S	K183104450S	K185103966S	K072105843S	M047520282S	K183105976S
M125R2632SE	M016104423S	K183104450S	K185103966S	K072105843S	M047520282S	K183105976S
M125R2634SE	M016104423S	K183104450S	K185103966S	K072105843S	M047520282S	K183105976S

Component View	OCP By-pass Plug	Hardware Kit
		
Model		
All Models	M264105399S	K212105975S

Important: The information contained in this bulletin is intended for use by trained, professional technicians who have the proper tools, equipment, and training to perform the required maintenance described above. This information is NOT intended for 'do-it-yourselfers', and you should not assume that this information applies to your equipment. If you have any questions regarding this information please visit our website at www.prestolite.com, or contact our technical service department at:

Group:	M125 Noseless Starters	Notes:
Form:	SP1028-DWG	Refer to SP1028 for parts breakdown.
Date:	December 8, 2010	Refer to TSB-3023 for hardware kit breakdown.
File:	Starter Parts List Section	

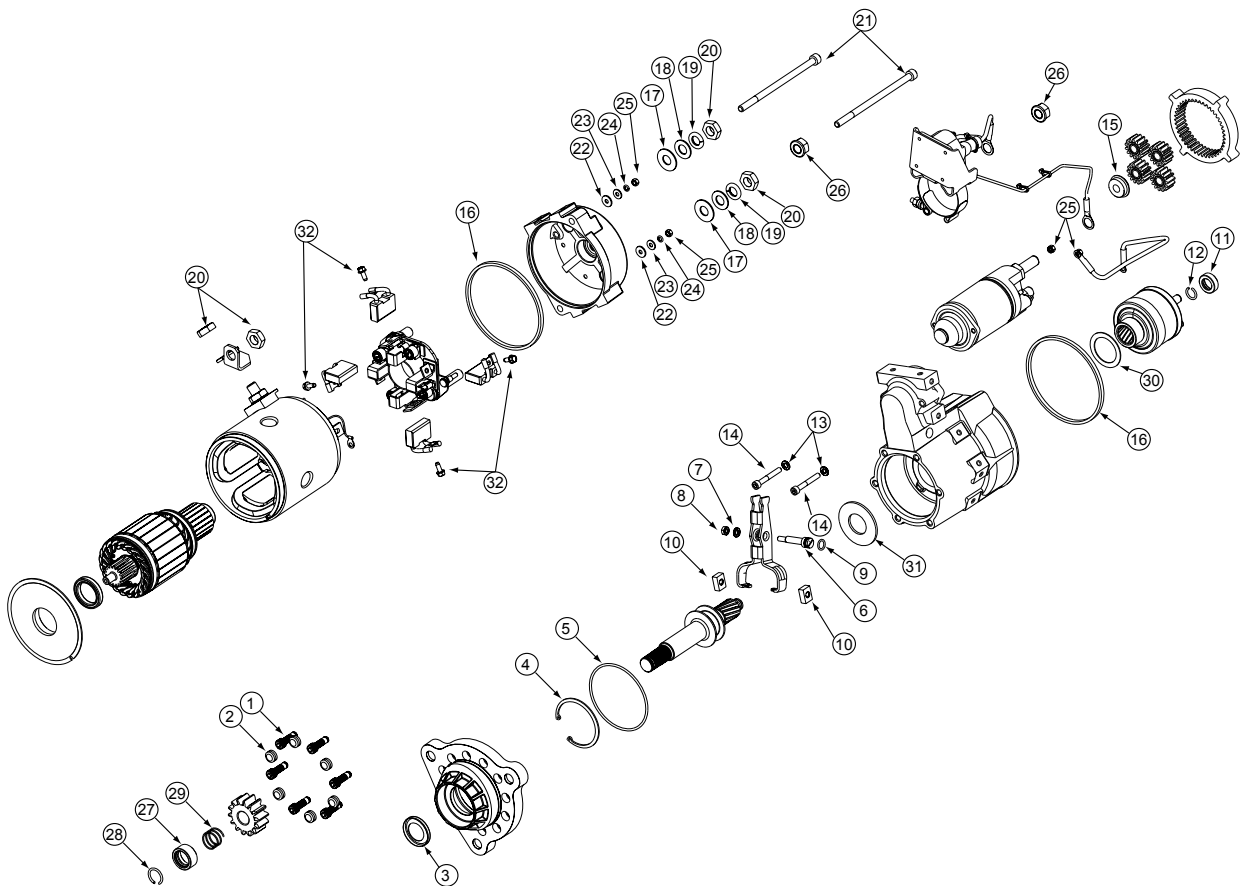
M125 Series Starter Motors



See TSB-3023
for Hardware Kit
breakdown

Important: The information contained in this bulletin is intended for use by trained, professional technicians who have the proper tools, equipment, and training to perform the required maintenance described above. This information is NOT intended for 'do-it-yourselfers', and you should not assume that this information applies to your equipment. If you have any questions regarding this information please visit our website at www.prestolite.com, or contact our technical service department at:

Source: Leece-Neville Heavy Duty Systems Division - Arcade, NY USA
Date: February 15, 2011
Bulletin No: TSB-3023
Models: M125R Noseless Starter Motor
Subject: Hardware kit for M125R Noseless starter motors K212105975S



Important: The information contained in this bulletin is intended for use by trained, professional technicians who have the proper tools, equipment, and training to perform the required maintenance described above. This information is NOT intended for 'do-it-yourselfers', and you should not assume that this information applies to your equipment. If you have any questions regarding this information please visit our website at www.prestolite.com, or contact our technical service department at:

Date: February 15, 2011

Bulletin No: TSB-3023

Note: All of these components are part of the hardware kit and not available for individual purchase.

Description	QTY	Key	Where used
SCREW 5/16-18	6	1	Mounts flange to shift hsg
PLUG,SEALING	6	2	Flange sealing plug
Seal Flange Hsg	1	3	Flange hsg seal
Retaining Ring	1	4	Flange bearing retaining ring
O-ring	1	5	Flange O-ring
Pivot Bolt	1	6	Shift lever bolt
Washer,lock	1	7	Shift lever bolt lock washer
Nut, M6	1	8	Shift lever bolt nut
O-ring	1	9	Shift lever bolt o-ring
Cam,Lever Arm	2	10	Shift Lever Cams
Retainer,Drive	1	11	Drive Retainer
Snap Ring	1	12	Drive Retainer Snap Ring
M6 Lockwasher	2	13	Solenoid mtn hardware
Screw M6	2	14	Solenoid mtn hardware
Thrust Spacer	1	15	Gear Box Spacer
Rubber Seal	2	16	Field & Frame Seal
Washer, Insulating	2	17	Negative insulating washer
Plain Washer 1/2	2	18	Negative hardware
Washer,Lock 1/2	2	19	Negative hardware
Nut 1/2 Jam	4	20	Negative/ Motor Strap Hardware
Bolt	2	21	Through Bolts
Washer,Insulating	2	22	Brush holder attachment hardware
Washer #10	2	23	Brush holder attachment hardware
Washer, Lock #10	4	24	Brush holder attachment hardware
Nut hex, M5	4	25	Brush holder attachment hardware
Nut, 1/2 Flange	2	26	Pos & Neg Nuts
Pinion Retainer	1	27	Holds pinion to shaft
Snap Ring	1	28	Holds pinion to shaft
Engagement Spring	1	29	Pinion Spring
Thrust Washer	1	30	Clutch thrust washer
Brake Washer	1	31	Clutch brake washer
Screw M5	4	32	Brush Screws

Important: The information contained in this bulletin is intended for use by trained, professional technicians who have the proper tools, equipment, and training to perform the required maintenance described above. This information is NOT intended for 'do-it-yourselfers', and you should not assume that this information applies to your equipment. If you have any questions regarding this information please visit our website at www.prestolite.com, or contact our technical service department at: