










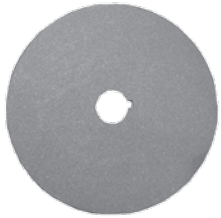


Group:	MDA/ MDP	Notes:
Form:	SP1018	Refer to SP1018-DWG for major component drawing.
Date:	November 9, 2009	Refer to TSB-3019 for hardware kit breakdown.
File:	Alternator Parts List Section	Refer to TSB-1116 for remote regulator cover.

Component View	Rotor Assembly	Stator Assembly	Front Housing Spacer, bearing, retainer	Rear Housing with Bushing	Rectifier Assembly
				 or 	 or 
Model	1	2	3	4	5
MDA2905	A020102692S	A023104978S	A014102451S	A012102459S	R051103705S
MDA2923	A020102692S	A022102492S	A014102457S	A012103708S	R051103705S
MDA2924	A020102692S	A022102493S	A014102457S	A012103708S	R051103705S
MDA2931	A020102692S	A022102493S	A014103517S	A012103519S	R051103705S
MDA2932	A020104755S	A023104978S	A014103703S	A012103708S	R051103705S
REV. F					
MDA2934	A020104755S	A023104978S	A014103688S	A012102459S	R051103705S
MDA3920	A020102855S	A023104979S	A014102454S	A012102459S	R051102487S
MDA3921	A020102855S	A023104979S	A014102451S	A012102459S	R051102487S
MDA3922	A020102893S	A023104979S	A014102457S	A012103708S	R051102487S
MDA3925	A020102855S	A023104979S	A014102457S	A012103708S	R051102487S
MDA3927	A020102893S	A023104979S	A014103443S	A012103439S	R051102487S
MDA3928	A020102855S	A023104979S	A014103454S	A012102459S	R051102487S
MDA3929	A020102893S	A023104979S	A014103443S	A012103439S	R051102487S
MDP2934	A020104755S	A023104978S	A014103841S	A012104033S	R051103705S
MDP3938H	A020102893S	A023104979S	A014103841S	A012105085S	R051102487S
MDP3938H-P	A020102893S	A023104979S	A014103841S	A012105085S	R051102487S
MDP3939H	A020105169S	A023105171S	A014103841S	A012105085S	R051102487S
MDP3939H-P	A020105169S	A023105171S	A014103841S	A012105085S	R051102487S
MDP3940H	A020102893S	A023104979S	A014103841S	A012105085S	R051102487S

To convert alternators to use a remote regulator replace existing regulator with K185103982S cover. Please refer to TSB-1116 for instructions.



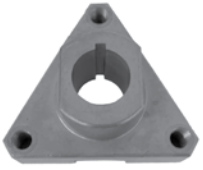
**Important:** The information contained in this bulletin is intended for use by trained, professional technicians who have the proper tools, equipment, and training to perform the required maintenance described above. This information is NOT intended for 'do-it-yourselfers', and you should not assume that this information applies to your equipment. If you have any questions regarding this information please visit our website at [www.prestolite.com](http://www.prestolite.com), or contact our technical service department at:

Group:	MDA/ MDP	Notes: Refer to SP1018-DWG for major component drawing. Refer to TSB-3019 for hardware kit breakdown.
Form:	SP1018	
Date:	November 9, 2009	
File:	Alternator Parts List Section	

Component View	Heatsink	Regulator	Fan	Brush Kit	Hardware Kit
					
Model	6	7	8	9	10
MDA2905	A966103704S	8RG2118S	A041103711S	K185103979S	K212103980S
MDA2923	A966103704S	8RG2118S	A041103711S	K185103979S	K212103980S
MDA2924	A966103704S	8RG2118S	A041103711S	K185103979S	K212103980S
MDA2931	A966103497S	0180000S60S	A041103499S	K185103979S	K212103980S
MDA2932	A966103704S	8RG2118S	A041103711S	K185103979S	K212103980S
REV.F					
MDA2934	A966103704S	8RG2118S	A041103711S	K185103979S	K212103980S
MDA3920	A966103704S	8RG3119S	A041103711S	K185103979S	K212103980S
MDA3921	A966103704S	8RG3119S	A041103711S	K185103979S	K212103980S
MDA3922	A966103704S	8RG3119S	A041103711S	K185103979S	K212103980S
MDA3925	A966103704S	8RG3119S	A041103711S	K185103979S	K212103980S
MDA3927	A966103437S	8RG3081S	A041103445S	K185103979S	K212103980S
MDA3928	A966103704S	8RG3119S	A041103711S	K185103979S	K212103980S
MDA3929	A966103437S	8RG3081S	A041103445S	K185103979S	K212103980S
MDP2934	N/A	8RG2118S	A041103711S	K185103979S	K212103980S
MDP3938H	N/A	8RG3119S	A041103711S	K185103979S	K212103980S
MDP3938H-P	N/A	8RG3119S	A041103711S	K185103979S	K212103980S
MDP3939H	N/A	8RG3119S	A041103711S	K185103979S	K212103980S
MDP3939H-P	N/A	8RG3119S	A041103711S	K185103979S	K212103980S
MDP3940H	N/A	8RG3119S	A041103711S	K185103979S	K212103980S

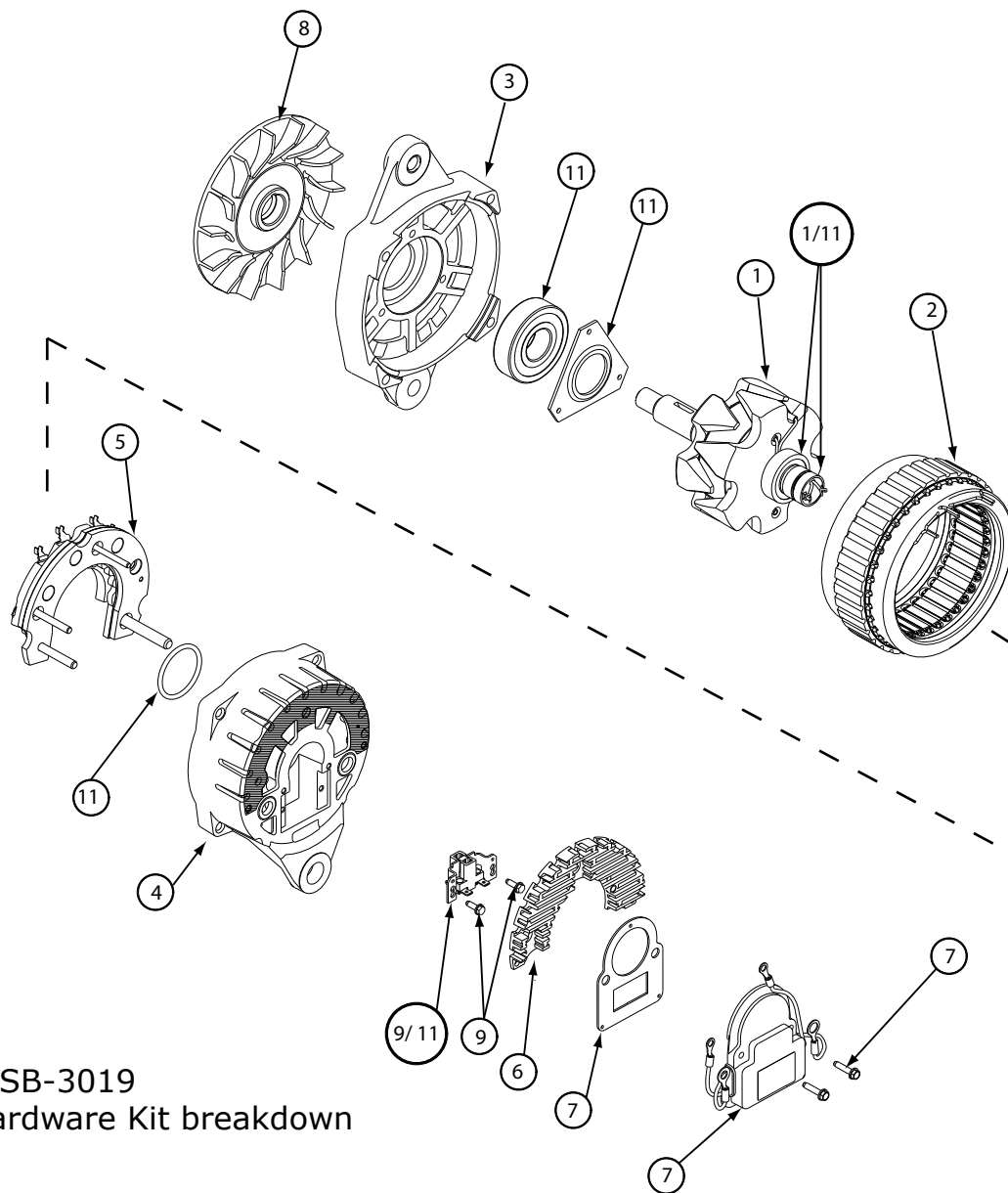
**Important:** The information contained in this bulletin is intended for use by trained, professional technicians who have the proper tools, equipment, and training to perform the required maintenance described above. This information is NOT intended for 'do-it-yourselfers', and you should not assume that this information applies to your equipment. If you have any questions regarding this information please visit our website at [www.prestolite.com](http://www.prestolite.com), or contact our technical service department at:

Group:	MDA/ MDP	Notes: Refer to SP1018-DWG for major component drawing. Refer to TSB-3019 for hardware kit breakdown.
Form:	SP1018	
Date:	November 9, 2009	
File:	Alternator Parts List Section	

Component View	Overhaul Kit	Capacitor	Flange / Pulley
			
Model	11	12	13
MDA2905	K183103978S	N/A	N/A
MDA2923	K183103978S	N/A	N/A
MDA2924	K183103978S	N/A	N/A
MDA2931	K183103978S	N/A	N/A
MDA2932	K183103978S	N/A	N/A
REV.F			
MDA2934	K183103978S	N/A	N/A
MDA3920	K183103978S	A031103133S	N/A
MDA3921	K183103978S	A031103133S	N/A
MDA3922	K183103978S	N/A	N/A
MDA3925	K183103978S	N/A	N/A
MDA3927	K183103978S	N/A	N/A
MDA3928	K183103978S	A031103133S	N/A
MDA3929	K183103978S	N/A	N/A
MDP2934	K183103978S	N/A	N/A
MDP3938H	K183103978S	N/A	K172105084S
MDP3938H-P	K183103978S	N/A	K176105256S
MDP3939H	K183103978S	N/A	N/A
MDP3939H-P	K183103978S	N/A	K175105256S
MDP3940H	K183103978S	N/A	K176105263S

**Important:** The information contained in this bulletin is intended for use by trained, professional technicians who have the proper tools, equipment, and training to perform the required maintenance described above. This information is NOT intended for 'do-it-yourselfers', and you should not assume that this information applies to your equipment. If you have any questions regarding this information please visit our website at [www.prestolite.com](http://www.prestolite.com), or contact our technical service department at:

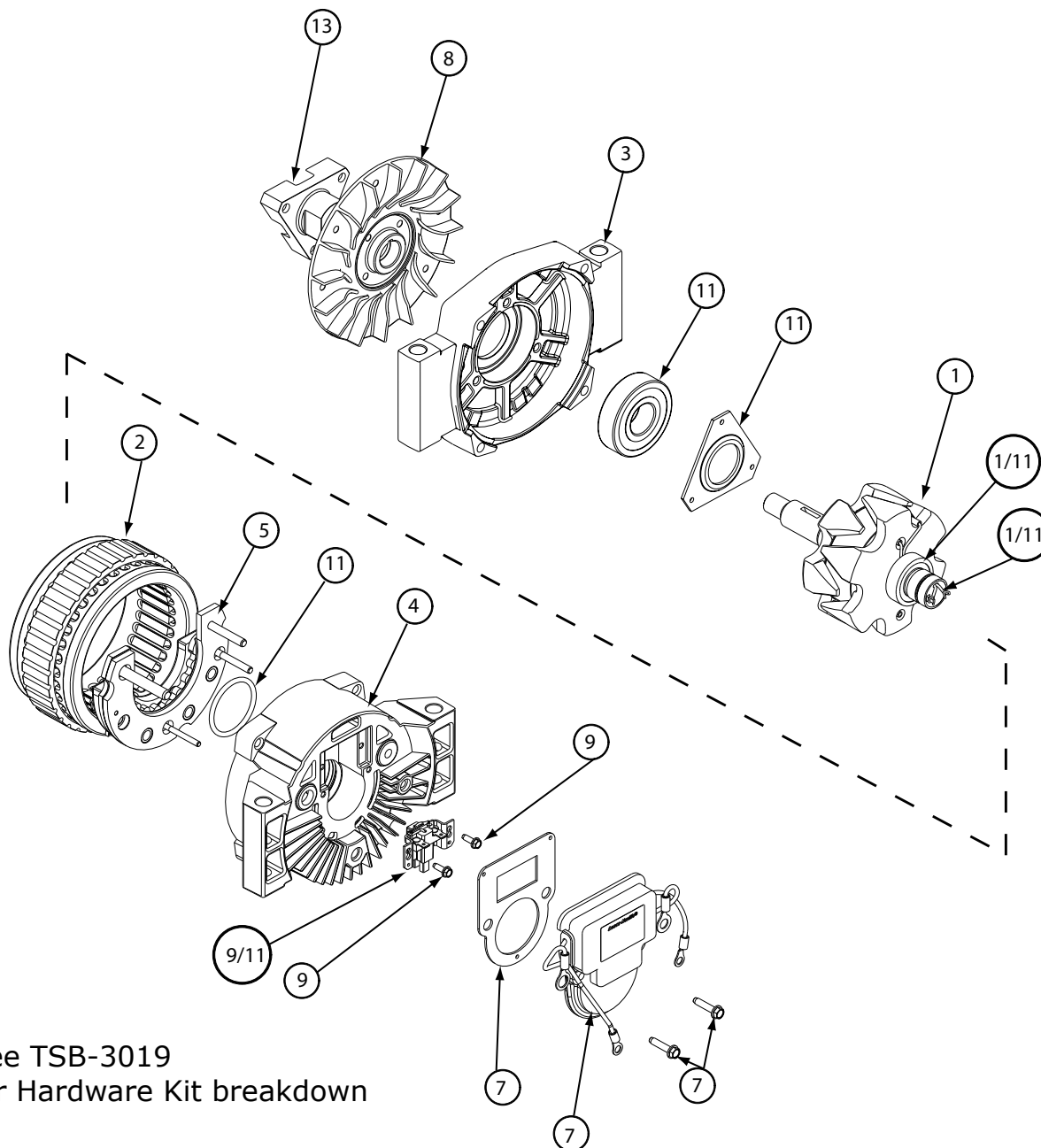
Group:	MDA/ MDP	Notes:
Form:	SP1018-DWG	Refer to SP1018 for parts breakdown.
Date:	September 19, 2008	Refer to TSB-3019 for hardware kit breakdown.
File:	Alternator Parts List Section	



See TSB-3019  
for Hardware Kit breakdown

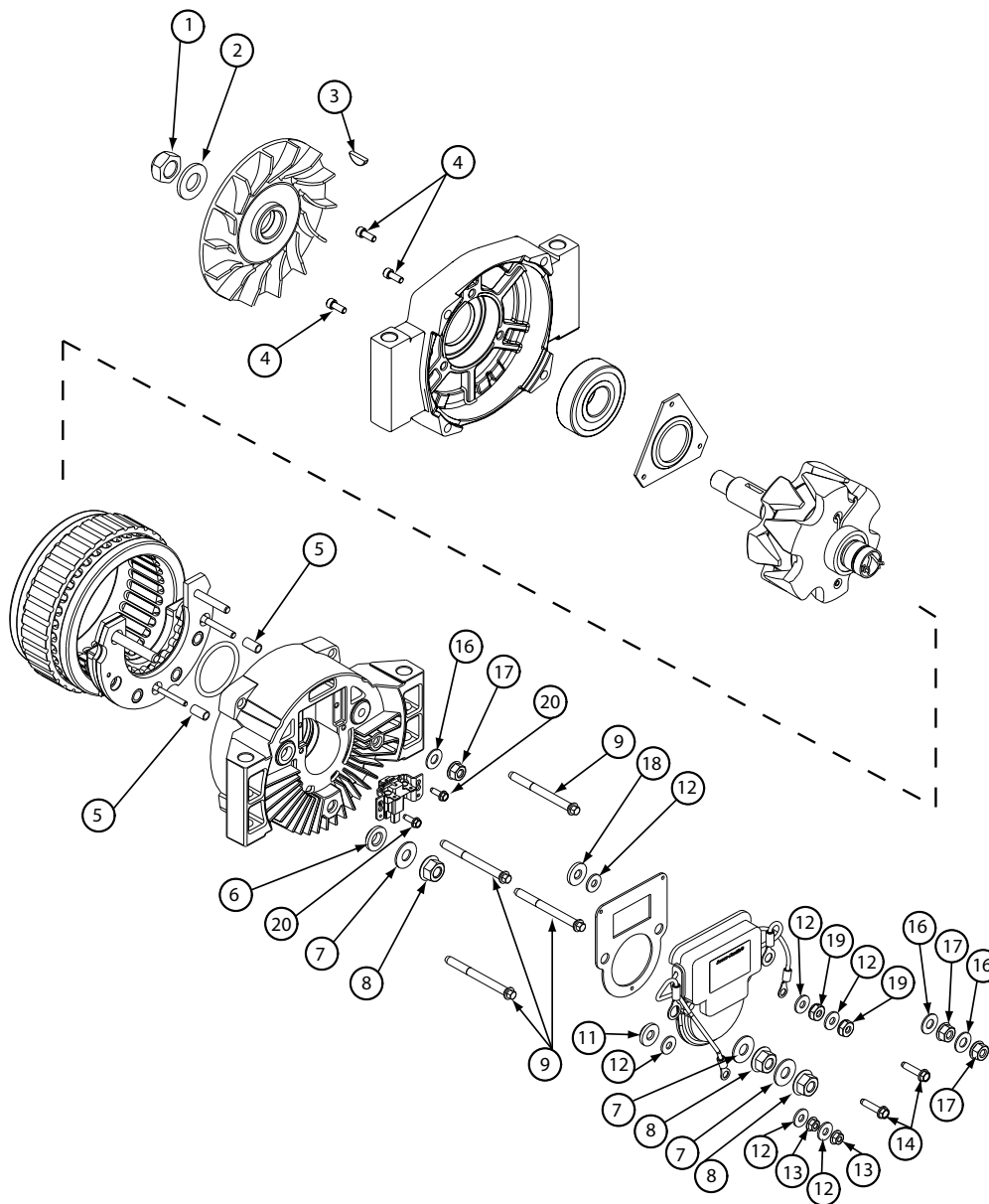
**Important:** The information contained in this bulletin is intended for use by trained, professional technicians who have the proper tools, equipment, and training to perform the required maintenance described above. This information is NOT intended for 'do-it-yourselfers', and you should not assume that this information applies to your equipment. If you have any questions regarding this information please visit our website at [www.prestolite.com](http://www.prestolite.com), or contact our technical service department at:

Group:	MDA/ MDP	Notes:
Form:	SP1018-DWG	Refer to SP1018 for parts breakdown.
Date:	September 19, 2008	Refer to TSB-3019 for hardware kit breakdown.
File:	Alternator Parts List Section	



**Important:** The information contained in this bulletin is intended for use by trained, professional technicians who have the proper tools, equipment, and training to perform the required maintenance described above. This information is NOT intended for 'do-it-yourselfers', and you should not assume that this information applies to your equipment. If you have any questions regarding this information please visit our website at [www.prestolite.com](http://www.prestolite.com), or contact our technical service department at:

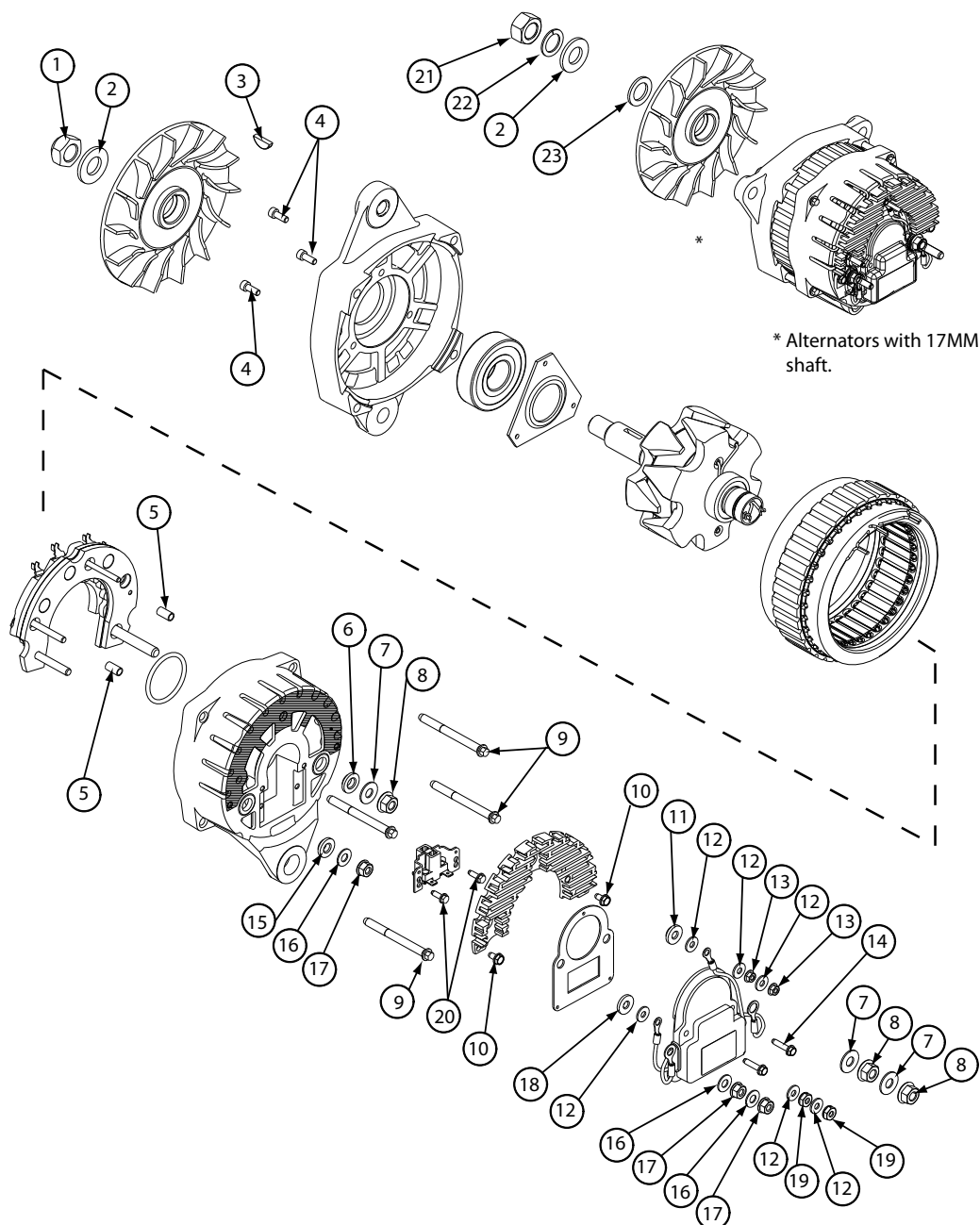
Source: Leece-Neville Heavy Duty Systems Division - Arcade, NY USA  
Date: September 19, 2008  
Bulletin No: TSB-3019  
Models: MDA/ MDP Alternators  
Subject: Hardware Kit for MDA/ MDP Alternators K212103980S



**Important:** The information contained in this bulletin is intended for use by trained, professional technicians who have the proper tools, equipment, and training to perform the required maintenance described above. This information is NOT intended for 'do-it-yourselfers', and you should not assume that this information applies to your equipment. If you have any questions regarding this information please visit our website at [www.prestolite.com](http://www.prestolite.com), or contact our technical service department at:

Date: September 19, 2008

Bulletin No: TSB-3019



**Note:** All of these components are part of the hardware kit and not available for individual purchase.

**Important:** The information contained in this bulletin is intended for use by trained, professional technicians who have the proper tools, equipment, and training to perform the required maintenance described above. This information is NOT intended for 'do-it-yourselfers', and you should not assume that this information applies to your equipment. If you have any questions regarding this information please visit our website at [www.prestolite.com](http://www.prestolite.com), or contact our technical service department at:

Date: September 19, 2008

Bulletin No: TSB-3019

Description	Qty	Key	Where used
Nut, lock	1	1	Pulley nut
Washer, flat	1	2	Pulley nut flat washer
Woodruff Key	1	3	Key for pulley
Screw, #10-32	3	4	Front bearing retainer screws
Screw, #10-32	3	4	Front bearing retainer screws
Sleeve, insulating	2	5	Insulators for D+ and AC terminals
Insulator washer	1	6	Positive output stud insulator
Washer, guard 5/16	3	7	Positive output stud washer
Nut, M8	3	8	Positive output stud nut
Thru Bolts (2.75")	4	9	Holds alternator together
Thru Bolts (2.50")	4	9	Holds alternator together
Screw, tap #10-32	2	10	Holds heat sink to rear housing
Insulator washer	1	11	D+ stud insulator
Washer, flat #10	6	12	Washers for D+ and AC terminals
Nut, con lock, M4	2	13	D+ stud nuts
Screw, tap #8-32	2	14	Regulator attaching screws
Insulator washer	1	15	Negative output stud insulator
Washer, flat 1/4"	3	16	Negative output stud flat washer
Nut, Con lock, M6	3	17	Negative output stud Con nut
Insulator washer	1	18	AC stud insulator
Nut, Con lock, M5	2	19	AC output stud Con nut
Screw, tap # 8-32	2	20	Brush attaching screws
Hex nut, M16	1	21	Pulley nut
Washer, lock	1	22	Pulley nut, lock washer
Spacer fan	1	23	Pulley spacer

**Important:** The information contained in this bulletin is intended for use by trained, professional technicians who have the proper tools, equipment, and training to perform the required maintenance described above. This information is NOT intended for 'do-it-yourselfers', and you should not assume that this information applies to your equipment. If you have any questions regarding this information please visit our website at [www.prestolite.com](http://www.prestolite.com), or contact our technical service department at: