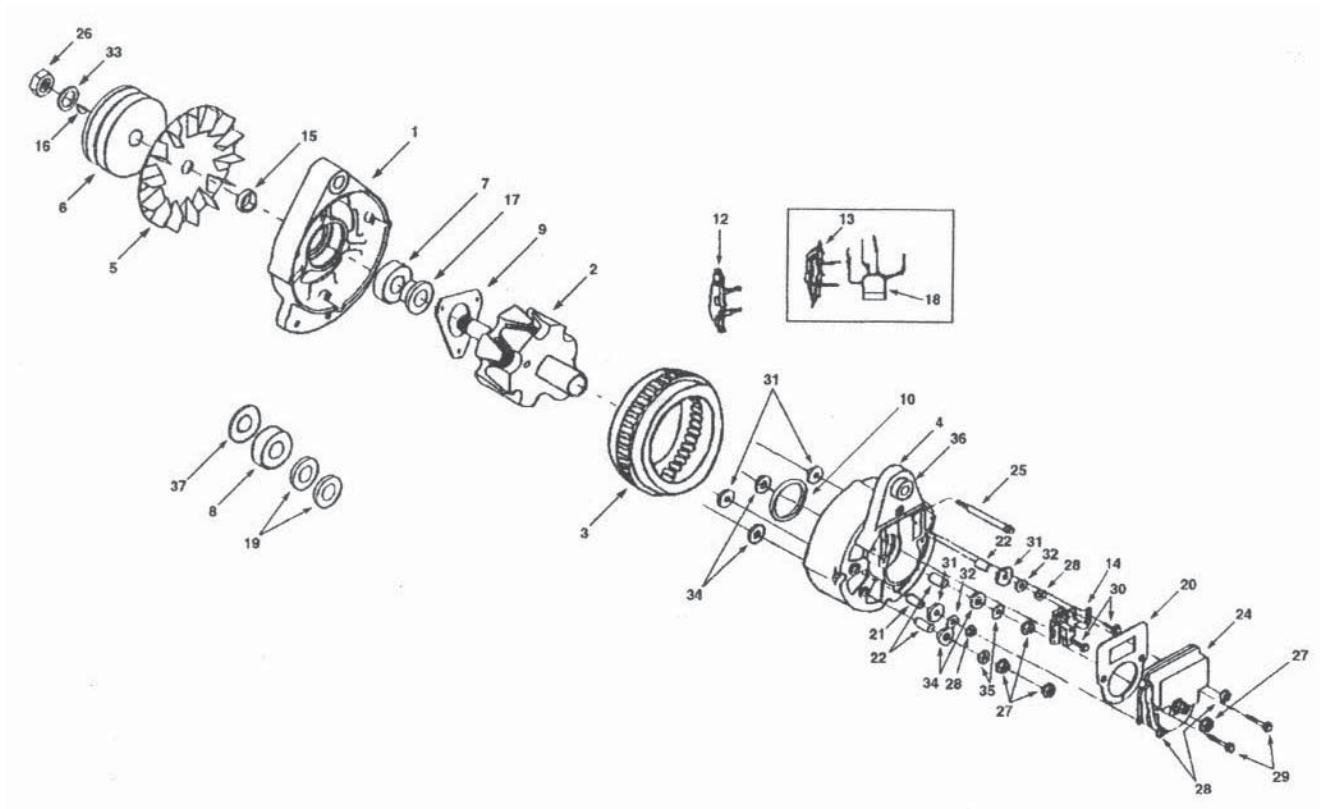


SERVICE PARTS LIST

GROUP:	8A
FORM:	8HC 8A
FILE:	Alternator Parts List Section
DATE:	September, 1996

MODEL	VOLTS	AMPS
Various See Chart		



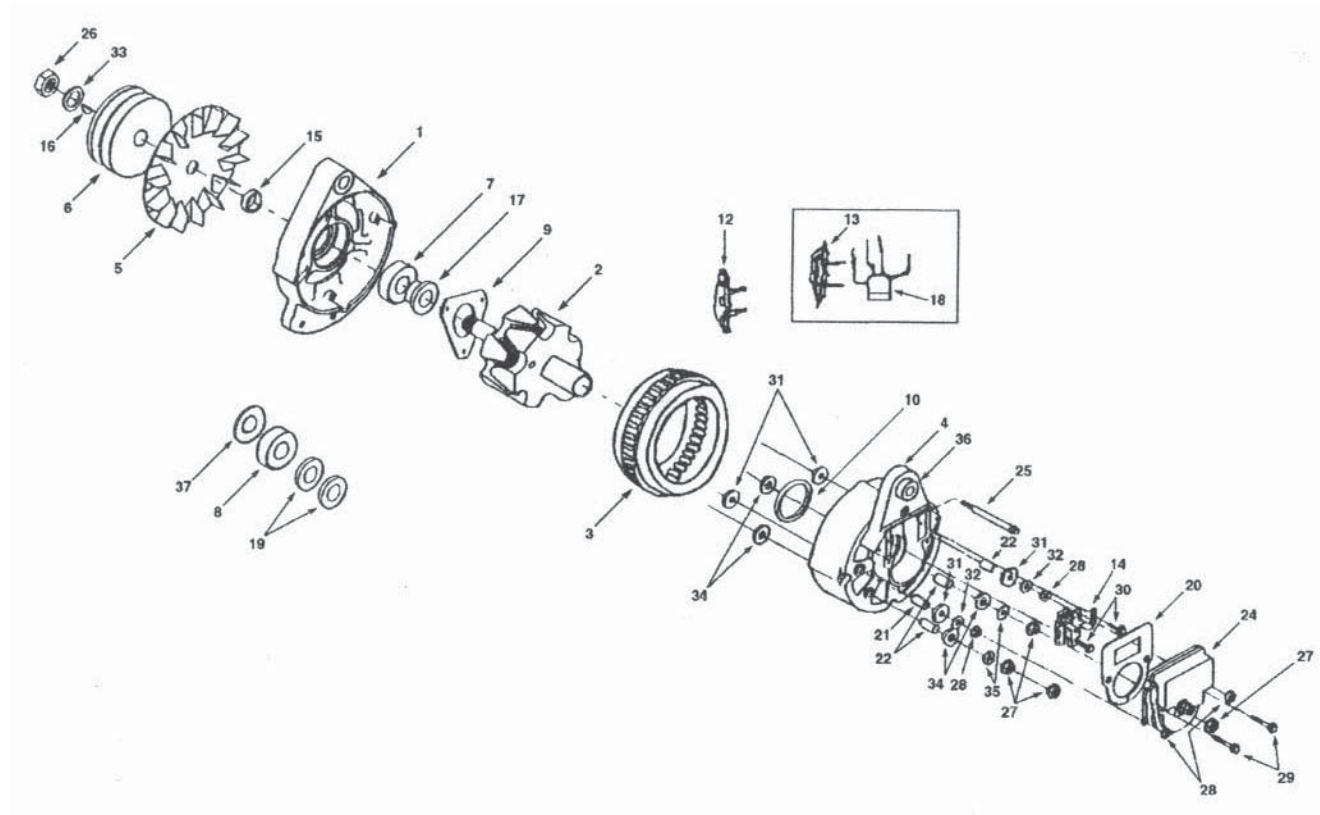
MODEL NO.	SALES NO.	1 HSNG FRONT	2 ROTOR ASSEM	3 STATOR ASSEM	4 HSNG REAR	5 FAN	6 PULLEY	7 BRNG FRONT	8 BRNG REAR	9 FR. BRNG RET	10 R. BRNG RET	11 DIODE ISOLAT.	12 DIODE REC.NEG.
8HC2027PAS	110-538	114-246	112-40	113-86	114-245	107-44	107-12	111-40	111-21	111-27	111-64		101-258
8HC2027PB	110-548	114-246	112-40	113-86	114-245	107-44	107-46	111-40	111-21	111-27	111-64		101-258

Important: The information contained in this bulletin is intended for use by trained, professional technicians who have the proper tools, equipment, and training to perform the required maintenance described above. This information is NOT intended for 'do-it-yourselfers', and you should not assume that this information applies to your equipment. If you have any questions regarding this information please visit our website at www.prestolite.com, or contact our technical service department at:

Leece-Neville Heavy Duty Systems
7585 Empire Drive
Florence, KY 41042

Phone/Fax: (866) 288-9853
webmail@prestolite.com

GROUP:	8A
FORM:	8HC 8A



MODEL NO.	SALES NO.	13 DIODE RCT. POS.	14 BRUSH ASSEM	15 SPACER FAN & PUL	16 WDRFF KEY 5	17 SLEEVE SHAFT	18 DIODE TRIO	19 SLIP RING	20 GASKET	21 SLEEVE INSUL	22 SLEEVE INSUL	23 INSUL MOLDED	24 VOLT REG
8HC2027PAS	110-538	101-164	103-46	120-147	120-7	120-89	101-130	112-22	103-14	115-27	115-26		105-306
8HC2027PB	110-548	101-164	103-46	120-147	120-7	120-89	101-130	112-22	103-14	115-27	115-26		105-306

Important: The information contained in this bulletin is intended for use by trained, professional technicians who have the proper tools, equipment, and training to perform the required maintenance described above. This information is NOT intended for 'do-it-yourselfers', and you should not assume that this information applies to your equipment. If you have any questions regarding this information please visit our website at www.prestolite.com, or contact our technical service department at:

