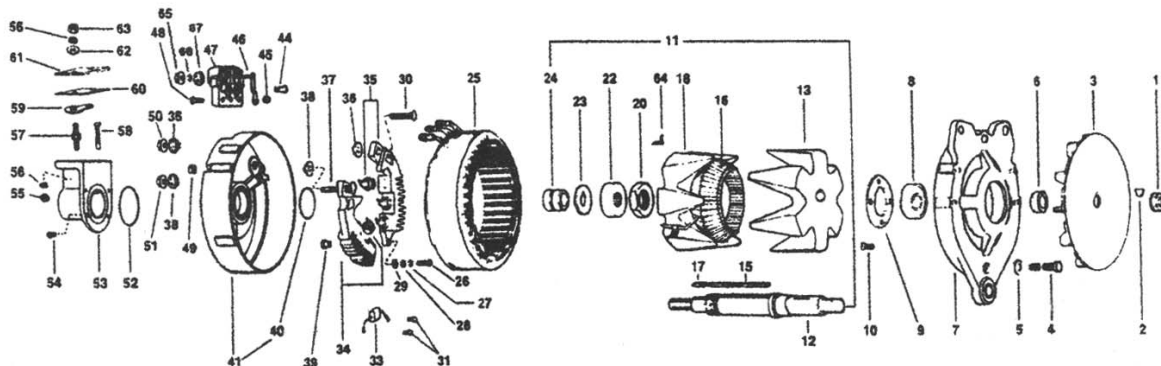


GROUP:	4452-4754AB
FORM:	4555-8/95 Rev. B294
FILE:	Alternator Parts List Section
DATE:	August, 1995

PRODUCTS COVERED

MODEL	VOLTS	AMPS
4452AB	14	75
4654AB	14	105
4754AB	14	130



Ref. No.	Part No.	Qty.	Description	Ref. No.	Part No.	Qty.	Description
1	76985	1	Nut, 5/8-18 Hex. Flange Lock	28	2385	2	Guard Washer
2	6399	1	Key, Woodruff #8	29	52066*	2	Washer, Insulation
3	75594	1	Fan Assembly	30	58432	1	Screw, Terminal
4	77914	3	Screw, 10-32 x 4.25 Hex. Hd. St.	31	73543	2	Screw, 6-32 Hex. Self Tapping
5	75451	3	Washer, Belleville	33	96545*	1	Capacitor Assembly
6	59225	1	Spacer, Fan	34	71180*	1	Rectifier Assy., Pos. (4452A & 4654A)
7	77755*	1	Housing, D.E.	34	79193*	1	Rectifier Assy., Pos. (4754A Only)
8	76262*	1	Bearing, 305	35	71181*	1	Rectifier Assy., Neg. (4452A & 4654A)
9	59234	1	Retainer, Bearing	35	79415*	1	Rectifier Assy., Pos. (4754A Only)
10	58754	4	Screw, 10-32 x .44 Fl. Hd.	36	73545*	2	Bushing, Insulation
11	79443*	1	Rotor Assembly	37	78336	1	Screw, Terminal
12	77909	1	Shaft	38	73546*	2	Bushing, Insulation
13	See Note		Rotor Half, Drive End (D.E.)	39	73547*	2	Bushing, Insulation
15	28384	1	Key, Square	40	57597*	1	"O" Ring
16	79476*	1	Coil, Rotor	41	71098*	1	Housing (S.R.E.) & "O" Ring Assy.
17	30300	1	Wedge, Slot	44	5179	2	Screw, 10-32 x .50 Rd. Hd. St.
18	See Note		Rotor Half, Slip Ring End (S.R.E.)	45	31587	3	Nut, 10-32 Lock
20	30806	1	Nut, 1"-14 Hex. St.	46	101226	3	Stud & Jumper Assembly
22	26853*	1	Bearing, 203	47	73635*	1	Insulator
23	57626	1	Washer, Insulation	48	73659	3	Screw, 10-32 x .50 Sq. Hd. St.
24	57462	1	Slip Ring Assembly	49	26175	2	Nut, Elastic Stop 10-32
25	97288*	1	Stator (4452A Only)	50	59982	1	Nut, Tenz 1/4-20
25	78272*	1	Stator (4654A Only)	51	73009	1	Nut, Tenz 5/16-18
25	78278*	1	Stator (4754A Only)	52	57611*	1	Ring, Sealing
26	78337	2	Screw, 10-32 x .75 Rd. Hd. St.	53	58777*	1	Housing, Brush Holder
27	2434	2	Lockwasher No. 10	54	13622	4	Screw, 8-32 x .44 Rd. Hd. St.

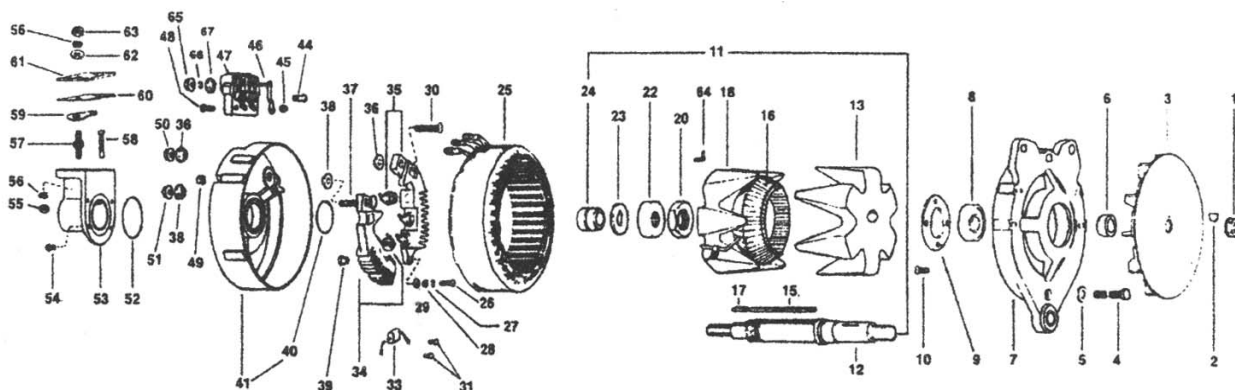
\*Suggested Service Parts

Important: The information contained in this bulletin is intended for use by trained, professional technicians who have the proper tools, equipment, and training to perform the required maintenance described above. This information is NOT intended for 'do-it-yourselfers', and you should not assume that this information applies to your equipment. If you have any questions regarding this information please visit our website at [www.prestolite.com](http://www.prestolite.com), or contact our customer service department at:

Leece-Neville Heavy Duty Systems  
7585 Empire Drive  
Florence, KY 41042

(800) 354-0560  
(859) 525-8801  
[info@prestolite.com](mailto:info@prestolite.com)

GROUP: 4452-4754AB  
FORM: 4555-8/95



Ref. No.	Part No.	Qty.	Description	Ref. No.	Part No.	Qty.	Description
55	4340	2	Nut, 10-24 Hex. St.	62	5293	2	Washer, Guard
56	4534	4	Lockwasher, No. 10 Shakeproof	63	32629	2	Nut, 10-32 Hex. St.
57	57613	2	Stud, Terminal	64	78047	1	Insulator, Slot
58	77302*	2	Brush	65	59040	3	Nut, 5/16-18 Hex
59	57594	2	Jumper	66	3231	3	Lockwasher
60	73814*	1	Gasket	67	95583	3	Spacer, Ins.
61	57615	1	Cover Terminal				

**\*Suggested Service Parts**

NOTE: If a rotor half needs to be replaced, then order a complete rotor assembly to eliminate the need for extremely critical balancing procedures. Part numbers for rotor halves are available from the factory upon request.