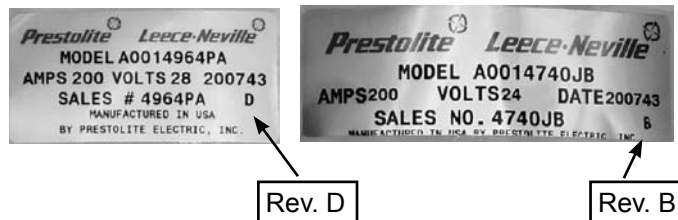


Group:	4000 J180 6 Diode	Notes:
Form:	SP1013	Refer to SP1013 -DWG for major component drawing. Refer to TSB-3011 for hardware kit breakdown for models requiring the R031101136S capacitor. Refer to TSB-3012 for models not requiring the capacitor. Refer to TSB-1118 for Solid Leadframe changeout procedure.
Date:	December 1, 2009	
File:	Alternator Parts List Section	

**This service parts list covers 6 diode rectified alternators less than 185 Amps and either remote rectified or remote regulated models.**








**\* This indicates the revision letter on the label. If your unit is this revision or later, use this service component.**



In addition to identifying the part number from the part label it is also required that you identify the REV level. It is probable that no REV level is present; if so, utilize the part number only to identify the appropriate part. However, if a REV level is present, choose the applicable part for that REV level which is listed below the part number.

**Important:** The information contained in this bulletin is intended for use by trained, professional technicians who have the proper tools, equipment, and training to perform the required maintenance described above. This information is NOT intended for 'do-it-yourselfers', and you should not assume that this information applies to your equipment. If you have any questions regarding this information please visit our website at [www.prestolite.com](http://www.prestolite.com), or contact our technical service department at:

Group:	4000 J180 6 Diode	Notes: Refer to SP1013 -DWG for major component drawing. Refer to TSB-3011 for hardware kit breakdown for models requiring the R031101136S capacitor. Refer to TSB-3012 for models not requiring the capacitor. Refer to TSB-1118 for Solid Leadframe changeout procedure.
Form:	SP1013	
Date:	December 1, 2009	
File:	Alternator Parts List Section	









Component View	Front Housing Spacer, bearing, retainer	Rotor	Rear Housing, bearing	Stator	Rectifier Negative	Rectifier Positive	Brush Box & gasket
							
Model	1	2	3	4	5	6	7*
A0014417AA Rev. B	A014101779S	A020101982S	A011102203S	A022101007S	N/A	N/A	A009097082S
A0014417JB Rev. B	A014101779S	A020101982S	A011103748S	A022101007S	N/A	N/A	A009097082S
A0014420JB	A014101779S	A020101991S	A011103748S	A022101007S	N/A	N/A	A009097082S
A0014727AA Rev. C	A014096830S	A020096597S	A011105236S	A022102177S	N/A	N/A	A009097082S
A0014727AB Rev. C	A014096830S	A020096597S	A011105236S	A022102177S	N/A	N/A	A009097082S
A0014727JB Rev. L	A014096830S	A020096597S	A011105236S	A022102177S	N/A	N/A	A009097082S
A0014728JB Rev. D	A014101355S	A020096597S	A011105242S	A022102177S	N/A	N/A	A009097082S
A0014729LC Rev. D	A014103456S	A020103457S	A011105237S	A022102177S	N/A	N/A	A009097082S
A0014805AA Rev. D	A014079009S	A020104115S	A011105242S	A022103504S	N/A	N/A	A009097082S
A0014805JB Rev. K	A014079009S	A020104115S	A011105242S	A022103504S	N/A	N/A	A009097082S
A0014806AA Rev. F	A014096830S	A020104115S	A011105242S	A022103504S	A051102220S	A051102219S	A009097082S
A0014806JB Rev. C	A014101149S	A020104115S	A011105242S	A022103504S	A051102220S	A051102219S	A009097082S
A0014826AA Rev. E	A014079009S	A020096597S	A011105242S	A022100722S	N/A	N/A	A009097082S
A0014826JB Rev. D	A014096830S	A020096597S	A011105236S	A022100722S	N/A	N/A	A009097082S
A0014827JB Rev. D	A014096830S	A020096597S	A011105242S	A022101140S	A051102220S	A051102219S	A009097082S
A0014829JB Rev. J	A014079009S	A020104115S	A011105242S	A022103504S	N/A	N/A	A009097082S

Component View	Brush Kit
	
Model	
All Models	K185104697S

\* See SP1013-DWG for details on items.

**Important:** The information contained in this bulletin is intended for use by trained, professional technicians who have the proper tools, equipment, and training to perform the required maintenance described above. This information is NOT intended for 'do-it-yourselfers', and you should not assume that this information applies to your equipment. If you have any questions regarding this information please visit our website at [www.prestolite.com](http://www.prestolite.com), or contact our technical service department at:

Group:	4000 J180 6 Diode	Notes: Refer to SP1013 -DWG for major component drawing. Refer to TSB-3011 for hardware kit breakdown for models requiring the R031101136S capacitor. Refer to TSB-3012 for models not requiring the capacitor. Refer to TSB-1118 for Solid Leadframe changeout procedure.
Form:	SP1013	
Date:	December 1, 2009	
File:	Alternator Parts List Section	

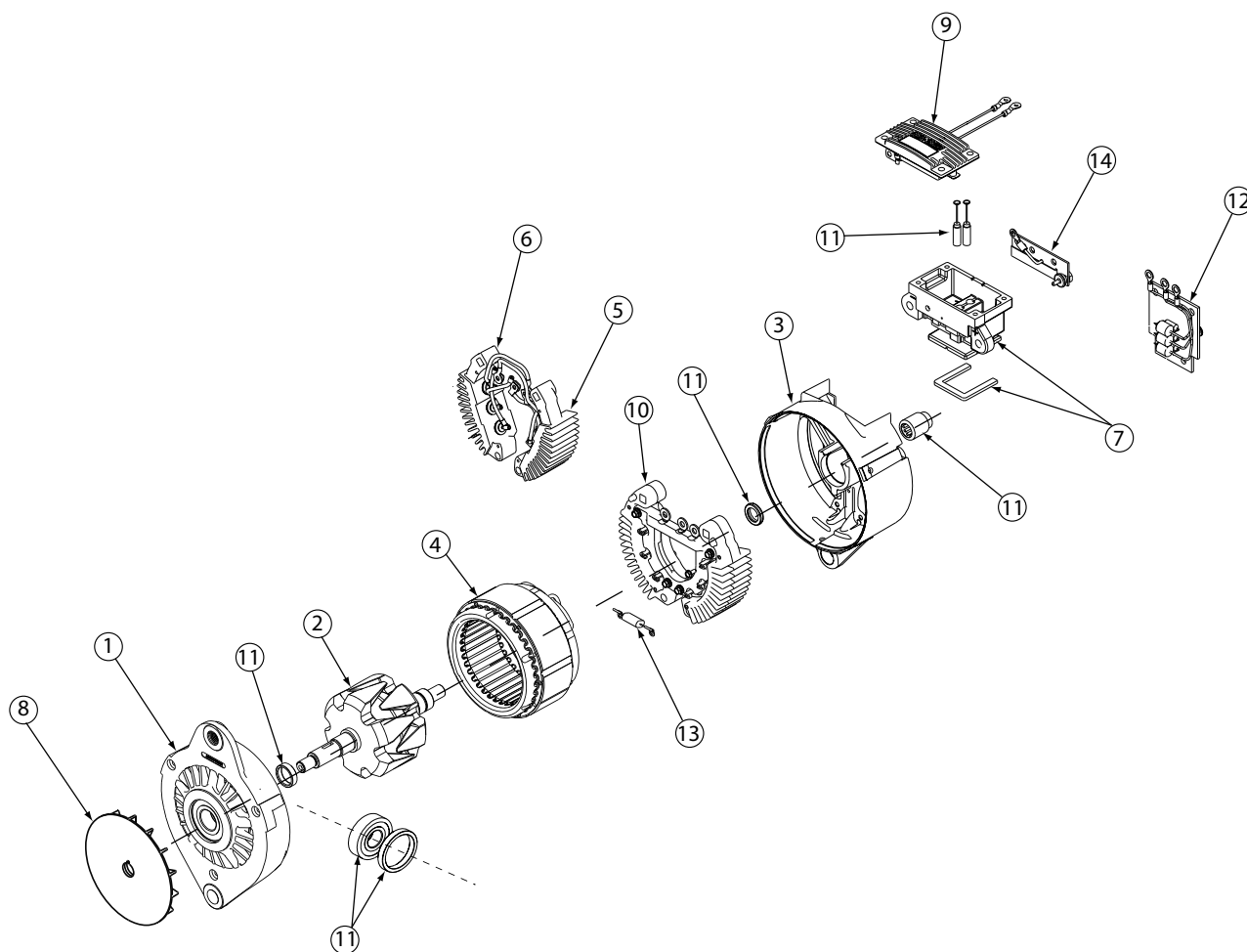
Component View	Fan	Regulator or Cover, with mounting screws	Rectifier Solid Lead Frame Pos/ Neg	Overhaul Kit Bearings, brushes, seal & spacer	Hardware Kit	Capacitor Assy.	Capacitor	Trio
								
Model	8	9	10	11		12	13	14
A0014417AA	A041099599S	A038100265S	A051105220S	K183104745S	K212104767S	N/A	N/A	N/A
Rev. B							A031105229S	N/A
A0014417JB	A041099599S	R240103745S*	A051105220S	K183104745S	K212104767S	N/A	N/A	N/A
Rev. B							A031105228S	N/A
A0014420JB	A041079035S	R240105470S	A051105220S	K183104745S	K212104767S	N/A	N/A	N/A
A0014727AA	A041102967S	A038100265S	A051105220S	K183104744S	K212104767S	N/A	N/A	N/A
Rev. C							A031105229S	N/A
A0014727AB	A041102967S	A038100265S	A051105220S	K183104744S	K212104767S	N/A	A031096545S	N/A
Rev. C							A031105229S	N/A
A0014727JB	A041079035S	R240096852S	A051105222S	K183104744S	K212104767S	N/A	A031096545S	A051096603S
Rev. L	A041102967S						A031105229S	
A0014728JB	A041102967S	R240096852S	A051105220S	K183104744S	K212104767S	N/A	A031096545S	A051096603S
Rev. D							A031105229S	
A0014729LC	A041102967S	R240096852S	A051105222S	K183104745S	K212104767S	N/A	A031096545S	A051096603S
Rev. D							A031105229S	
A0014805AA	A041079035S	A038100265S	A051105220S	K183104744S	K212104767S	N/A	A031096545S	N/A
Rev. D							A031105229S	N/A
A0014805JB	A041102967S	R240103725S	A051105220S	K183104744S	K212104767S		A031096545S	N/A
Rev. K							A031105229S	N/A
A0014806AA	A041079035S	A038100265S	N/A	K183104744S	K212104773S	R031101136S	A031101281S	N/A
Rev. F								N/A
A0014806JB	A041102967S	R240103725S	N/A	K183104744S	K212104773S	R031101136S	A031101281S	N/A
Rev. C								N/A
A0014826AA	A041079035S	A038100265S	A051105220S	K183104744S	K212104767S	N/A	A031096545S	N/A
Rev. E							A031105229S	N/A
A0014826JB	A041079035S	R240096852S	A051105222S	K183104744S	K212104767S	N/A	A031096545S	A051096603S
Rev. D							A031105229S	
A0014827JB	A041102967S	R240103822S	N/A	K183104744S	K212104773S	R031101136S	A031101281S	N/A
Rev. D								
A0014829JB	A041102967S	R240103726S	A051105220S	K183104744S	K212104767S	N/A	A031096545S	N/A
Rev. J							A031105229S	

\* Use R240105470S for 56V setpoint.

**Important:** The information contained in this bulletin is intended for use by trained, professional technicians who have the proper tools, equipment, and training to perform the required maintenance described above. This information is NOT intended for 'do-it-yourselfers', and you should not assume that this information applies to your equipment. If you have any questions regarding this information please visit our website at [www.prestolite.com](http://www.prestolite.com), or contact our technical service department at:

Group:	4000 J180	Notes:
Form:	SP1013-DWG	Refer to SP1013-4000-6-diode for parts breakdown.
Date:	January 27, 2009	Refer to TSB-3011 for hardware kit breakdown for models requiring the R031101136S capacitor. Refer to TSB-3012 for models not requiring the capacitor.
File:	Alternator Parts List Section	

This service parts list covers 6 diode rectified alternators less than 185 Amps and either remote rectified or remote regulated models.



See TSB-3011 and  
TSB-3012 for Hardware  
Kit breakdowns

Actual appearances of some  
components may differ from the actual  
product. This document is intended to  
be for generic referral only.

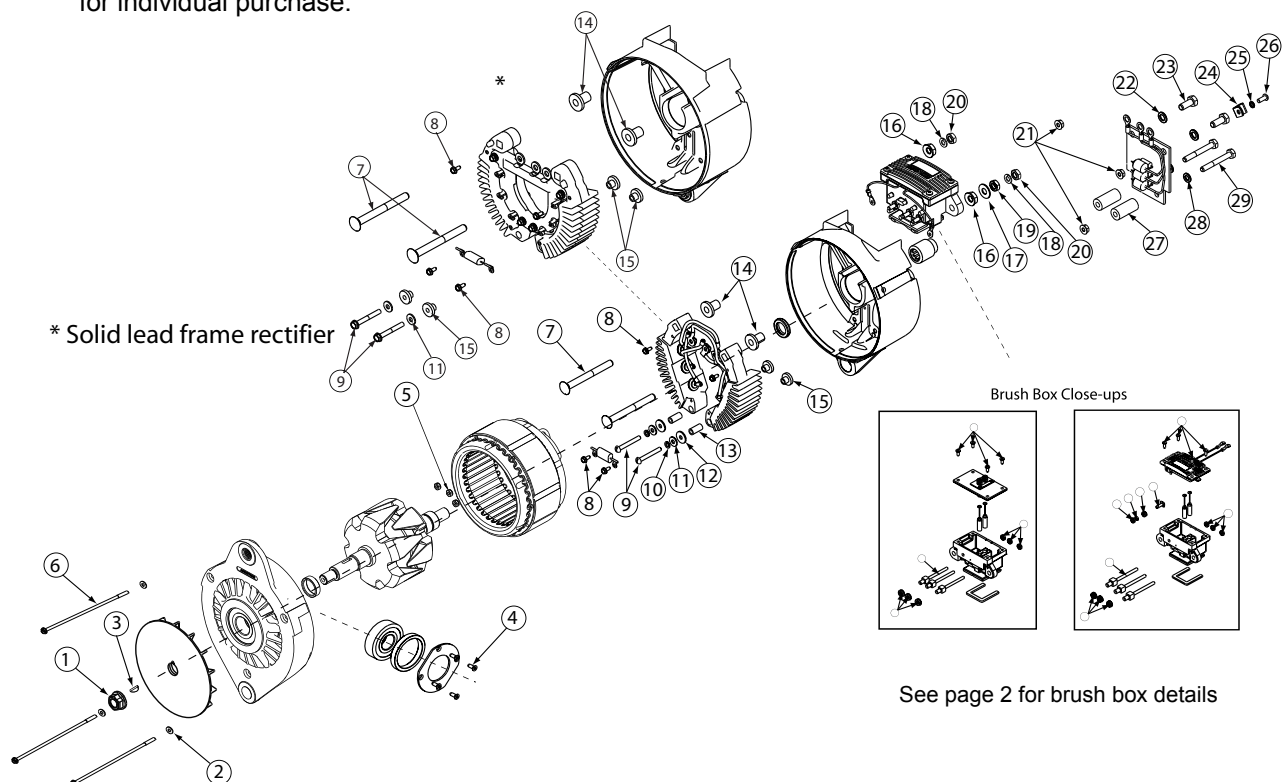
**Important:** The information contained in this bulletin is intended for use by trained, professional technicians who have the proper tools, equipment, and training to perform the required maintenance described above. This information is NOT intended for 'do-it-yourselfers', and you should not assume that this information applies to your equipment. If you have any questions regarding this information please visit our website at [www.prestolite.com](http://www.prestolite.com), or contact our technical service department at:

Source: Leece-Neville Heavy Duty Systems Division - Arcade, NY USA  
Date: January 27, 2009  
Bulletin No: TSB-3011  
Models: 4000 Series 6 Diode Rectifier Alternators  
Subject: Hardware Kit for 4000 6 Diode Series Alternators K212104773S

This series covers 6 diode rectified alternators less than 185 Amps and either remote rectified or remote regulated models requiring the R031101136S capacitor.

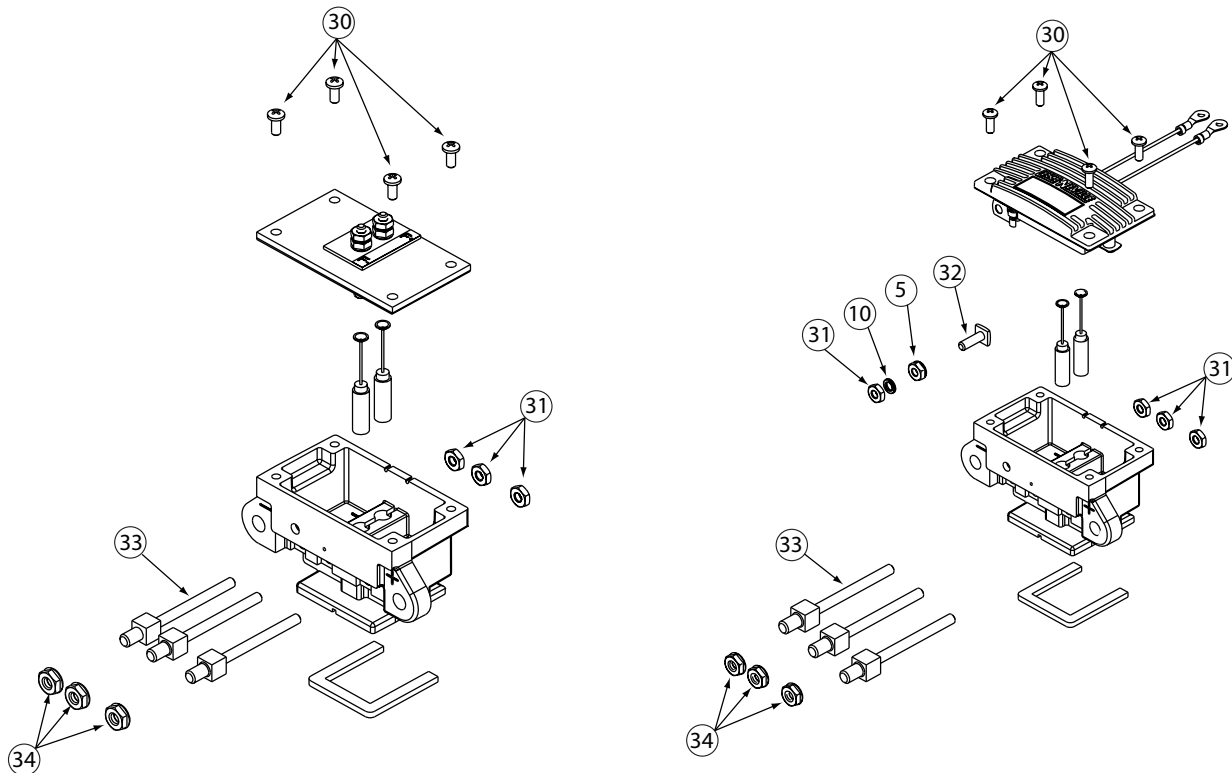
NOTE: All of these components are part of the hardware kit and not available for individual purchase.

4000 Series J180 Mount



**Important:** The information contained in this bulletin is intended for use by trained, professional technicians who have the proper tools, equipment, and training to perform the required maintenance described above. This information is NOT intended for 'do-it-yourselfers', and you should not assume that this information applies to your equipment. If you have any questions regarding this information please visit our website at [www.prestolite.com](http://www.prestolite.com), or contact our technical service department at:

Date: January 27, 2009  
Bulletin No: TSB-3011



**Important:** The information contained in this bulletin is intended for use by trained, professional technicians who have the proper tools, equipment, and training to perform the required maintenance described above. This information is NOT intended for 'do-it-yourselfers', and you should not assume that this information applies to your equipment. If you have any questions regarding this information please visit our website at [www.prestolite.com](http://www.prestolite.com), or contact our technical service department at:

Date: January 27, 2009

Bulletin No: TSB-3011

Description	Qty.	Key	Where used
NUT, 5/8-18, LOCK	1	1	Fan Nut
WASHER, FLAT#10	3	2	Thru-Bolt flat washer
KEY, WOODRUFF #8	1	3	Shaft key
SCREW, THREAD FORMING	4	4	Front housing retainer plate holding screw
NUT	4	5	Internal stator nuts to AC-taps
THROUGH BOLT	3	6	Thru-Bolt Hold Alternator Together
SCREW TERMINAL 5/16-18 x 3 1/4	2	7	Positive and Negative Output Studs
SCREW, TAP #6-32X11/32	4	8	Hold regulator sense leads and capacitor to rectifier rings
SCREW #10-32 X 1 1/2	2	9	Holds rectifier ring to rear housing
SCREW #10-32 X 1 1/2	2	9	Holds rectifier ring to rear housing
WASHER, LOCK #10	3	10	Lock washer for bolt (Key 9)
WASHER, FLAT #10	2	11	Flat washer for bolt (Key 9)
WASHER INSULATING	2	12	Insulates bolt (Key 9) from rectifier rings
BUSHING, INSULATING	2	13	Insulates bolt (Key 9) from rectifier rings
BUSHING, INSULATING	2	14	Insulates output studs and rectifier rings from rear housing
BUSHING, INSULATING	4	15	Insulates rectifier ring from rear housing
NUT, CON LOCK, 5/16-18	2	16	Holds positive and negative studs into rear housing
WASHER GUARD, 5/16	1	17	Washer used on negative output stud
WASHER, LOCK 5/16	2	18	Lock washer for positive and negative output stud
HEX NUT, 5/16-18 UNC	1	19	Jam nut used on negative output stud
HEX NUT, 5/16-18 UNC	2	20	Nut used to attach customer cables to alternator output studs
NUT, #10-32 FLANGE LOCK	3	21	Thru Bolts nuts
WASHER, LOCK, 5/16"	2	22	Lock washer for (Key 23)
SCREW 5/16-18 X 3/4 HEX HD	2	23	Attaches capacitor to alternator
CLAMP	1	24	Secure capacitor wires to alternator
WASHER LOCK, #10	1	25	Lock washer for (Key 26)
SCREW #10-32 X 1/2 RD HD	1	26	Attaches clamp (Key 24) to alternator
SPACER	2	27	Spacer for external capacitor
WASHER, LOCK 1/4"	2	28	Lock washer for bolt (Key 29)
SCREW 1/4-20 X 2 HEX HD	2	29	Attaches capacitor to alternator
SCREW #8-32 X 3/8"	4	30	Attaches regulator to brush box
SCREW #8-32 X 7/16"	4	30	Attaches regulator to brush box
HEX NUT, #10-32 UNF	4	31	Holds AC studs into brush box
SCREW #10-32 X 5/8" SQ HD	1	32	Ignition stud
STUD, TERMINAL	3	33	AC Studs
NUT, CON LOCK, 1/4-20	3	34	AC Stud Nuts

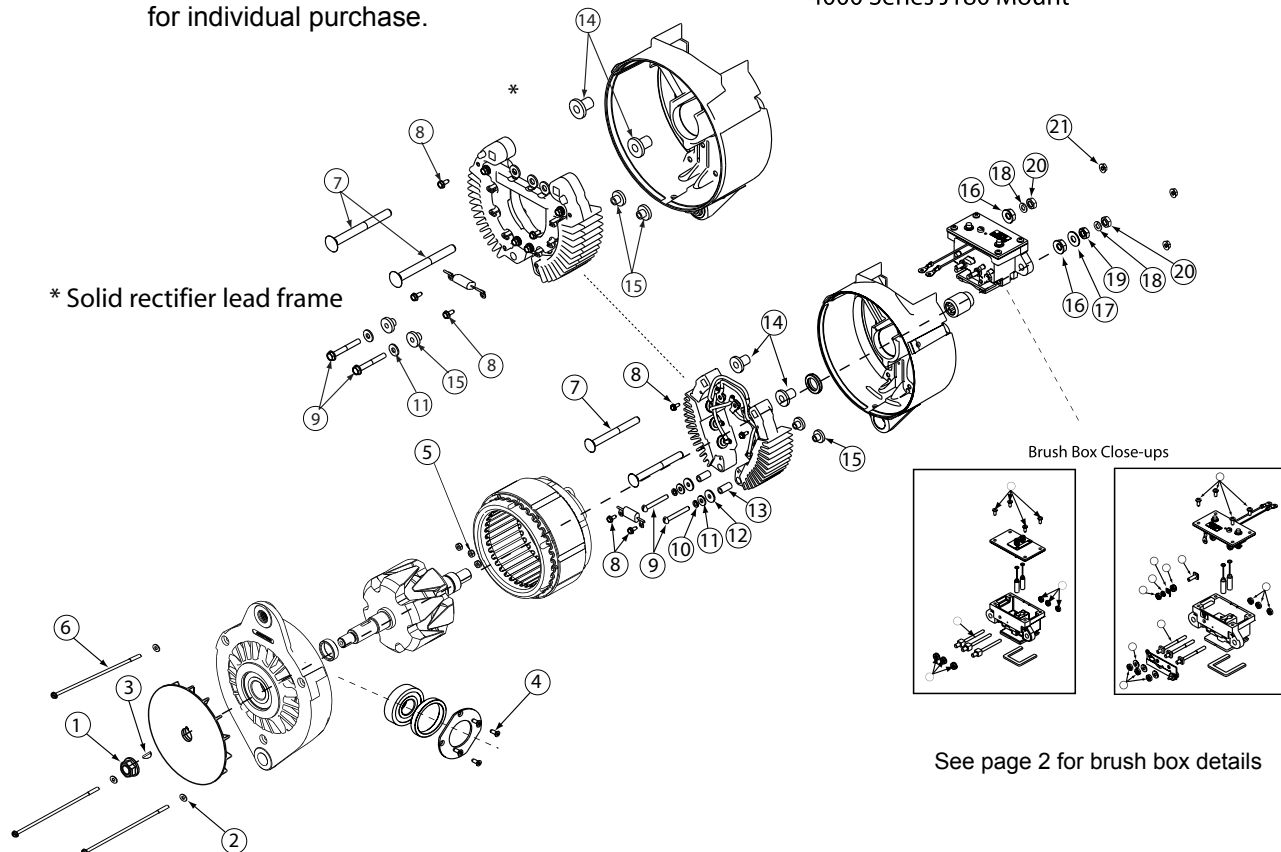
**Important:** The information contained in this bulletin is intended for use by trained, professional technicians who have the proper tools, equipment, and training to perform the required maintenance described above. This information is NOT intended for 'do-it-yourselfers', and you should not assume that this information applies to your equipment. If you have any questions regarding this information please visit our website at [www.prestolite.com](http://www.prestolite.com), or contact our technical service department at:

Source: Leece-Neville Heavy Duty Systems Division - Arcade, NY USA  
Date: January 27, 2008  
Bulletin No: TSB-3012  
Models: 4000 Series 6 Diode Rectifier Alternators  
Subject: Hardware Kit for 4000 6 Diode Series Alternators K212104767S

This series covers 6 diode rectified alternators less than 185 Amps and either remote rectified or remote regulated models not requiring the R031101136S capacitor.

NOTE: All of these components are part of the hardware kit and not available for individual purchase.

4000 Series J180 Mount

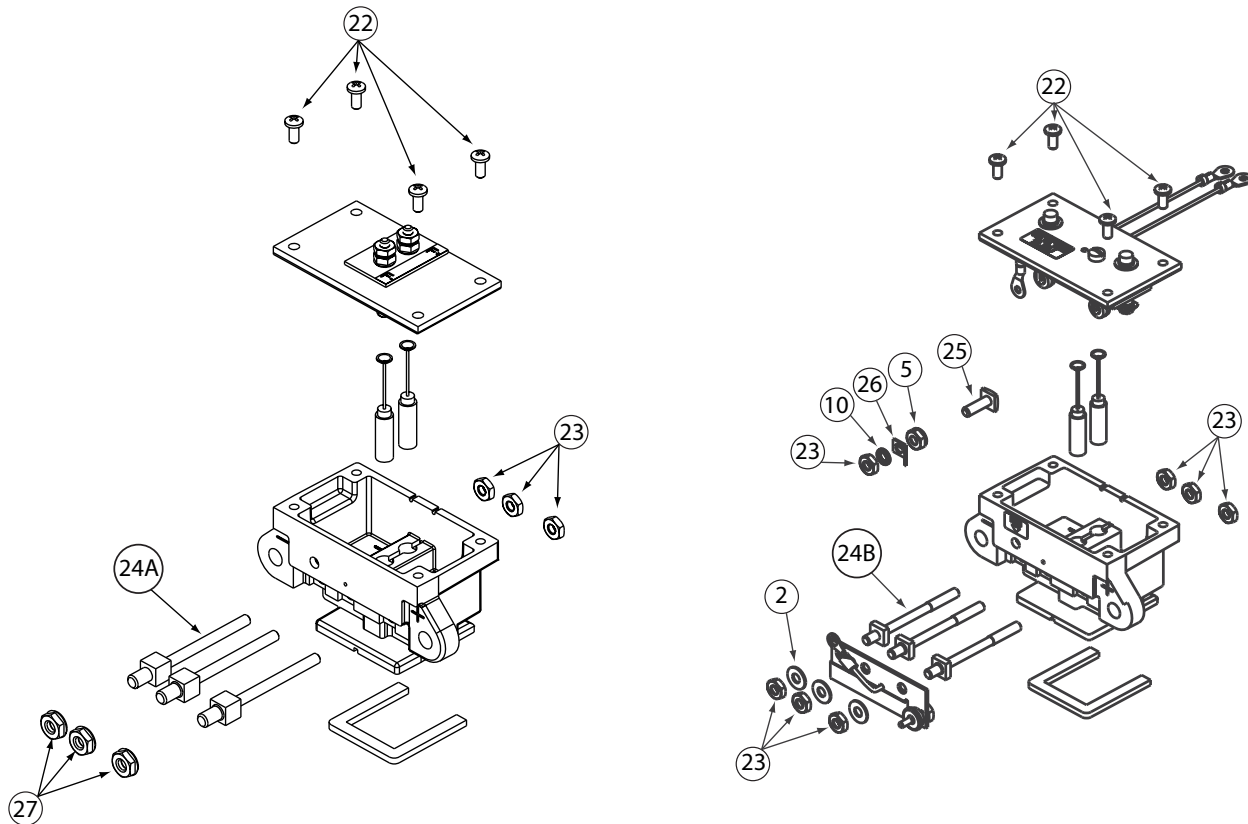


**Important:** The information contained in this bulletin is intended for use by trained, professional technicians who have the proper tools, equipment, and training to perform the required maintenance described above. This information is NOT intended for 'do-it-yourselfers', and you should not assume that this information applies to your equipment. If you have any questions regarding this information please visit our website at [www.prestolite.com](http://www.prestolite.com), or contact our technical service department at:



Date: January 27, 2008

Bulletin No: TSB-3012



**Important:** The information contained in this bulletin is intended for use by trained, professional technicians who have the proper tools, equipment, and training to perform the required maintenance described above. This information is NOT intended for 'do-it-yourselfers', and you should not assume that this information applies to your equipment. If you have any questions regarding this information please visit our website at [www.prestolite.com](http://www.prestolite.com), or contact our technical service department at:

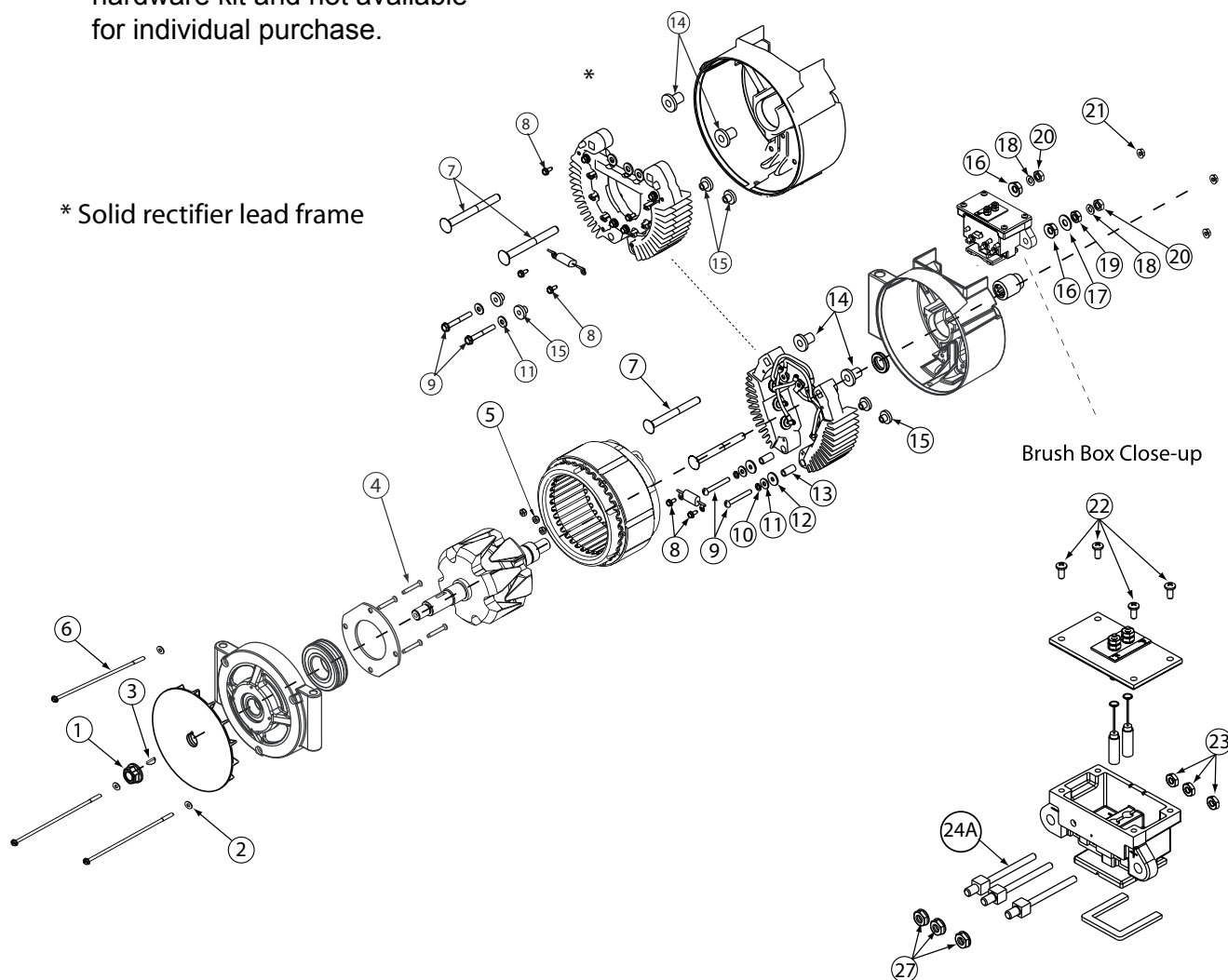
Date: January 26, 2008

Bulletin No: TSB-3012

NOTE: All of these components are part of the hardware kit and not available for individual purchase.

## 4900 T-Mount

\* Solid rectifier lead frame



**Important:** The information contained in this bulletin is intended for use by trained, professional technicians who have the proper tools, equipment, and training to perform the required maintenance described above. This information is NOT intended for 'do-it-yourselfers', and you should not assume that this information applies to your equipment. If you have any questions regarding this information please visit our website at [www.prestolite.com](http://www.prestolite.com), or contact our technical service department at:

Date: January 27, 2008

Bulletin No: TSB-3012

Description	Qty.	Key	Where used
NUT, 5/8-18, LOCK	1	1	Fan Nut
WASHER, FLAT#10	6	2	Thru-Bolt flat washer
KEY, WOODRUFF #8	1	3	Shaft key
SCREW, THREAD FORMING	4	4	Front housing retainer plate holding screw
NUT	4	5	Internal stator nuts to AC-taps
THROUGH BOLT	3	6	Thru-Bolt Hold Alternator Together
THROUGH BOLT	3	6	Thru-Bolt Hold Alternator Together
SCREW TERMINAL 5/16-18 x 3 1/4	2	7	Positive and Negative Output Studs
SCREW, TAP #6-32X11/32	4	8	Hold regulator sense leads and capacitor to rectifier rings
SCREW #10-32 X 1 1/2	2	9	Holds rectifier ring to rear housing
SCREW #10-32 X 1 1/2	2	9	Holds rectifier ring to rear housing
WASHER, LOCK #10	3	10	Lock washer for bolt (Key 9)
WASHER, FLAT #10	2	11	Flat washer for bolt (Key 9)
WASHER INSULATING	2	12	Insulates bolt (Key 9) from rectifier rings
BUSHING, INSULATING	2	13	Insulates bolt (Key 9) from rectifier rings
BUSHING, INSULATING	2	14	Insulates output studs and rectifier rings from rear housing
BUSHING, INSULATING	4	15	Insulates rectifier ring from rear housing
NUT, CON LOCK, 5/16-18	2	16	Holds positive and negative studs into rear housing
WASHER GUARD, 5/16	1	17	Washer used on negative output stud
WASHER, LOCK 5/16	2	18	Lock washer for positive and negative output stud
HEX NUT, 5/16-18 UNC	1	19	Jam nut used on negative output stud
HEX NUT, 5/16-18 UNC	2	20	Nut used to attach customer cables to alternator output studs
NUT, #10-32 FLANGE LOCK	3	21	Thru Bolts nuts
SCREW #8-32 X 3/8	4	22	Regulator attachment screws
HEX NUT, #10-32 UNF	7	23	AC Tap Nuts
STUD TERMINAL	3	24A	AC Studs
STUD TERMINAL	3	24B	AC Studs
SCREW, #10-32 X 5/8, SQ HD	1	25	Ignition stud
TERMINAL, 1/4", 45	1	26	Ignition terminal
NUT, CON LOCK, 1/4-20	3	27	AC nuts

**Important:** The information contained in this bulletin is intended for use by trained, professional technicians who have the proper tools, equipment, and training to perform the required maintenance described above. This information is NOT intended for 'do-it-yourselfers', and you should not assume that this information applies to your equipment. If you have any questions regarding this information please visit our website at [www.prestolite.com](http://www.prestolite.com), or contact our technical service department at: