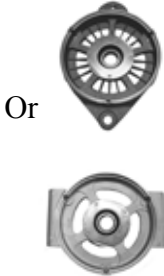












Group:	4000 Remote Rect-Reg	Notes:
Form:	SP1014-4000-Remote	Refer to SP1014-DWG-Remote-rect-reg for parts breakdown. Refer to TSB-3015 for hardware kit breakdown.
Date:	July 7, 2009	
File:	Alternator Parts List Section	




Component View	Front Housing Spacer, bearing, retainer	Rotor	Rear Housing, bearing	Stator	Rectifier Heatsink Negative	Brush Box
	Or 		Or 			
Model	1	2	3	4	5	6*
A0014840AAH	A014103469S	A020103462S	A011104778S	A022103463S	A967079978S	A009097082S
A0014841PAH	A014103584S	A020103462S	A011103695S	A022103463S	A967079978S	A009097082S
A0014850AA	A014103584S	A020096898S	A011104780S	A022103487S	A967079978S	A009097082S
A0014852AA	A014079009S	A020096898S	A011104780S	A022103503S	A967079978S	A009097082S
A0014854AA	A014079009S	A020100824S	A011104780S	A022103503S	A967079978S	A009097082S
A0014856AA	A014079009S	A020101890S	A011104780S	A022103502S	A967079978S	A009097082S
A0014892AA	A014103866S	A020102833S	A011104780S	A022102689S	A967079978S	A009097082S
A0014941PGH	A014103584S	A020103462S	A011104140S	A022103463S	A967079978S	A009097082S


\* See SP1014-DWG for details on items.

**Important:** The information contained in this bulletin is intended for use by trained, professional technicians who have the proper tools, equipment, and training to perform the required maintenance described above. This information is NOT intended for 'do-it-yourselfers', and you should not assume that this information applies to your equipment. If you have any questions regarding this information please visit our website at [www.prestolite.com](http://www.prestolite.com), or contact our technical service department at:

Group:	4000 Remote Rect-Reg	Notes:
Form:	SP1014-4000-Remote	Refer to SP1014-DWG-Remote-rect-reg for parts breakdown. Refer to TSB-3015 for hardware kit breakdown.
Date:	July 7, 2009	
File:	Alternator Parts List Section	

Component View	Fan	Regulator or Cover	Rectifier Heatsink Positive	Overhaul Kit Bearings, slip ring, O-ring, brush holder	Hardware Kit
					
Model	7	8	9		
A0014840AAH	A041102967S	A038100265S	A967079977S	K183104745S	K212104775S
A0014841PAH	A041102967S	A038100265S	A967079977S	K183104737S	K212104775S
A0014850AA	A041102967S	A038100265S	A967079977S	K183104744S	K212104775S
A0014852AA	A041102967S	A038100265S	A967079977S	K183104744S	K212104775S
A0014854AA	A041102967S	A038100265S	A967079977S	K183104744S	K212104775S
A0014856AA	A041102817S	A038100265S	A967079977S	K183104744S	K212104775S
A0014892AA	A041102967S	A038100265S	A967079977S	K183104744S	K212104775S
A0014941PGH	A041102967S	A038100265S	A967079977S	K183104737S	K212104775S

Component View	AC Strap	Terminal Mounting Pad	Pulley
			
Model	16	17	
A0014840AAH	K185104777S	A263101333S	N/A
A0014841PAH	K185104777S	A263101333S	N/A
A0014850AA	K185104777S	A263101333S	N/A
A0014852AA	K185104777S	A263101333S	N/A
A0014854AA	K185104777S	A263101333S	N/A
A0014856AA	K185104777S	A263101333S	K176102906S
A0014892AA	K185104777S	A263101333S	N/A
A0014941PGH	K185104777S	A263101333S	N/A

Component View	Brush Kit
	
Model	
All Models	K185104697S

**Important:** The information contained in this bulletin is intended for use by trained, professional technicians who have the proper tools, equipment, and training to perform the required maintenance described above. This information is NOT intended for 'do-it-yourselfers', and you should not assume that this information applies to your equipment. If you have any questions regarding this information please visit our website at [www.prestolite.com](http://www.prestolite.com), or contact our technical service department at:

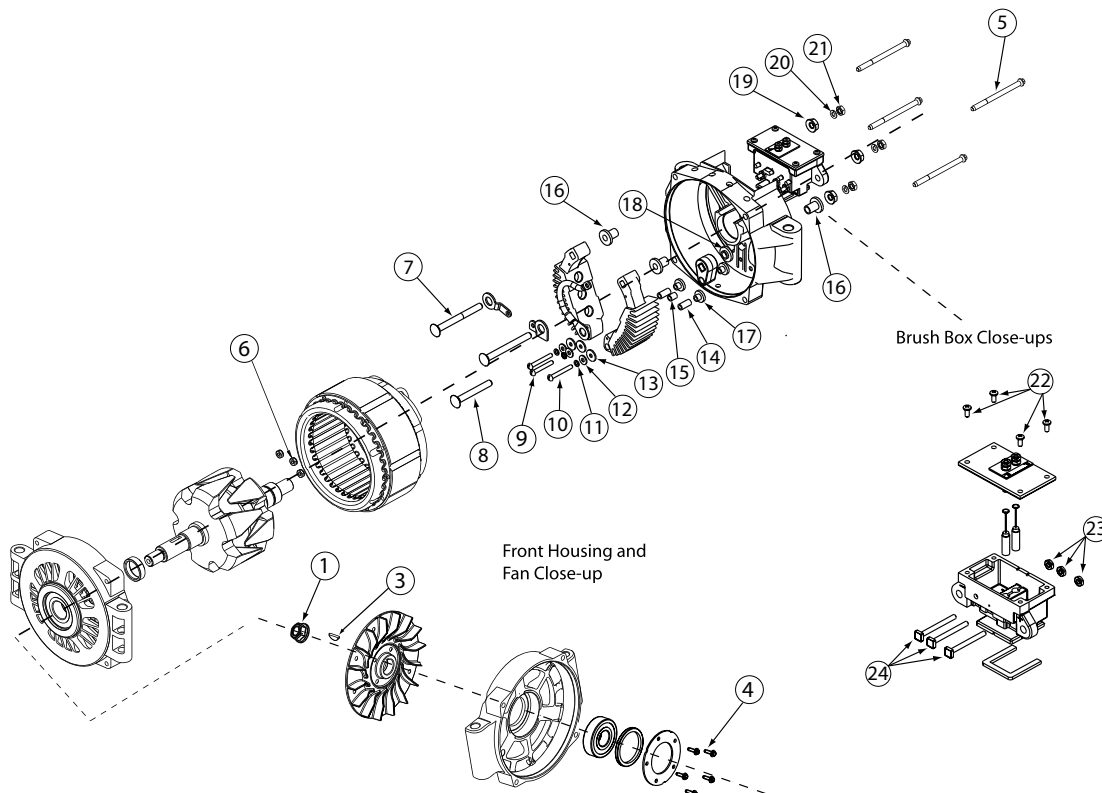
Source: Leece-Neville Heavy Duty Systems Division - Arcade, NY USA  
Date: February 12, 2008  
Bulletin No: TSB-3015  
Models: 4000 Series Without Regulators / Rectifiers  
Subject: Hardware Kit for 4000 series T-mount alternators K212104775S for AA series units without regulator.

**K212104775S**

Illustration and key numbers for 4000AA Pad Mount models.

NOTE: All of these components are part of the hardware kit and not available for individual purchase.

4000AA Series Pad Mount



**Important:** The information contained in this bulletin is intended for use by trained, professional technicians who have the proper tools, equipment, and training to perform the required maintenance described above. This information is NOT intended for 'do-it-yourselfers', and you should not assume that this information applies to your equipment. If you have any questions regarding this information please visit our website at [www.prestolite.com](http://www.prestolite.com), or contact our technical service department at:

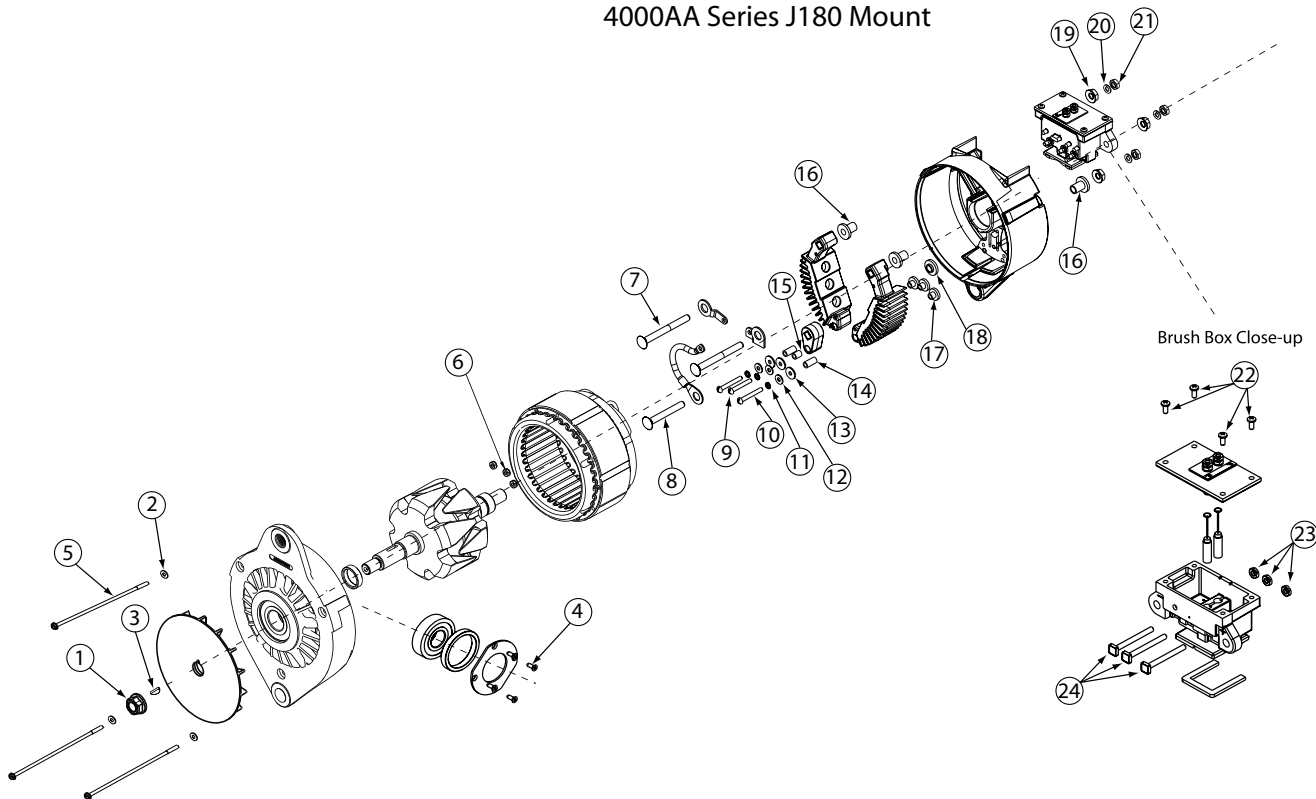
Date: February 13, 2008

Bulletin No: TSB-3015

Illustration and key numbers for 4000AA J180 Mount models.

NOTE: All of these components are part of the hardware kit and not available for individual purchase.

4000AA Series J180 Mount



**Important:** The information contained in this bulletin is intended for use by trained, professional technicians who have the proper tools, equipment, and training to perform the required maintenance described above. This information is NOT intended for 'do-it-yourselfers', and you should not assume that this information applies to your equipment. If you have any questions regarding this information please visit our website at [www.prestolite.com](http://www.prestolite.com), or contact our technical service department at:






Date: February 13, 2008



Bulletin No: TSB-3015

Description	Qty.	Key	Where used
NUT, 5/8-18, LOCK	1	1	Fan Nut
WASHER, FLAT#10	3	2	Thru-Bolt flat washer
KEY, WOODRUFF #8	1	3	Shaft key
SCREW, THREAD FORMING	4	4	Front housing retainer plate holding screw
SCR TPG 10-32X.62 1/4H	5	4	Front housing retainer plate holding screw
THRU.BOLT #10-32	3	5	Thru-Bolts holds Alternator together
BOLT, THRU 1/4X20 4.12	4	5	Thru-Bolts holds Alternator together
BOLT, THRU 1/4X20 3.50	4	5	Thru-Bolts holds Alternator together
NUT	3	6	Hold stator leads brush box
BOLT 5/16 X 3-1/4"	2	7	AC bolt
BOLT 5/16 X 2-1/2"	1	8	AC bolt
SCREW #10 X 1-3/8"	1	9	Attaches AC bolt holder to alternator rear housing.
Screw	2	10	Attaches rectifier heatsink to rear housing.
LOCKWASHER	3	11	Lockwashers for bolts that attach AC bolt holder and rectifier heatsink
WASHER FLT.203-.500-.0	3	12	Flatwashers for bolts that attach AC bolt holder and rectifier heatsink
Washer	3	13	Insulating washer for bolts that attach AC bolt holder and rectifier heatsink
Bushing	2	14	Insulating bushing for bolts that attach rectifier heatsink
BUSHING, INSULATION	1	15	Insulating bushing for bolt that attach AC bolt holder to alternator rear housing
Bushing	3	16	Insulating bushing for AC bolts
Bushing	3	17	Insulates rectifier heatsinks from alternator rear housing
Bushing	1	18	Insulates AC bolt holder from alternator rear housing
NUT, TENZ - 5/16-18	3	19	Secure AC bolts to rear housing
LOCKWASHER	3	20	Lockwasher for customer cables
HEX NUT	3	21	Nut to attach customer cables
SCREW	4	22	Screws that attach remote regulator cover
NUT, STEEL #10-32	3	23	Nuts that hold AC taps in brush box
Stud	3	24	AC bolt

**Important:** The information contained in this bulletin is intended for use by trained, professional technicians who have the proper tools, equipment, and training to perform the required maintenance described above. This information is NOT intended for 'do-it-yourselfers', and you should not assume that this information applies to your equipment. If you have any questions regarding this information please visit our website at [www.prestolite.com](http://www.prestolite.com), or contact our technical service department at:

Group:	4000 Remote Rect-Reg	Notes:
Form:	SP1014-4000-Remote	Refer to SP1014-DWG-Remote-rect-reg for parts breakdown. Refer to TSB-3015 for hardware kit breakdown.
Date:	April 15, 2008	
File:	Alternator Parts List Section	

Component View	Fan	Regulator or Cover	Rectifier Heatsink Positive	Overhaul Kit Bearings, slip ring, O-ring, brush holder	Hardware Kit
					
Model	7	8	9		
A0014840AAH	A041102967S	A038100265S	A967079977S	K183104745S	K212104775S
A0014841PAH	A041102967S	A038100265S	A967079977S	K183104737S	K212104775S
A0014850AA	A041102967S	A038100265S	A967079977S	K183104744S	K212104775S
A0014852AA	A041102967S	A038100265S	A967079977S	K183104744S	K212104775S
A0014854AA	A041102967S	A038100265S	A967079977S	K183104744S	K212104775S
A0014856AA	A041102817S	A038100265S	A967079977S	K183104744S	K212104775S
A0014892AA	A041102967S	A038100265S	A967079977S	K183104744S	K212104775S
A0014941PGH	A041102967S	A038100265S	A967079977S	K183104737S	K212104775S

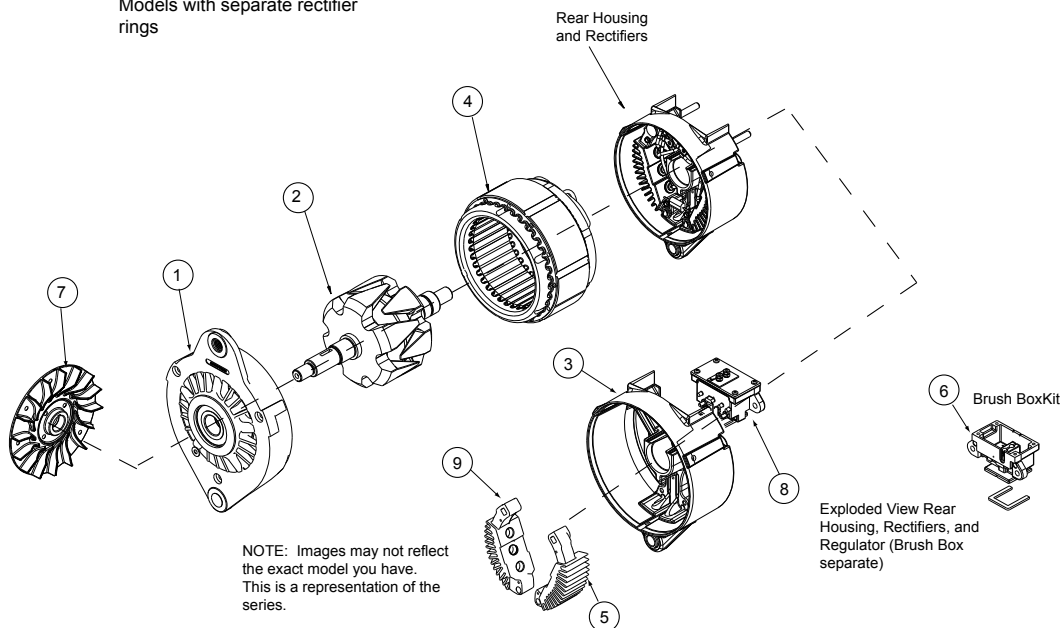
Component View	AC Strap	Terminal Mounting Pad
		
Model	16	17
A0014840AAH	K185104777S	A263101333S
A0014841PAH	K185104777S	A263101333S
A0014850AA	K185104777S	A263101333S
A0014852AA	K185104777S	A263101333S
A0014854AA	K185104777S	A263101333S
A0014856AA	K185104777S	A263101333S
A0014892AA	K185104777S	A263101333S
A0014941PGH	K185104777S	A263101333S

**Important:** The information contained in this bulletin is intended for use by trained, professional technicians who have the proper tools, equipment, and training to perform the required maintenance described above. This information is NOT intended for 'do-it-yourselfers', and you should not assume that this information applies to your equipment. If you have any questions regarding this information please visit our website at [www.prestolite.com](http://www.prestolite.com), or contact our technical service department at:

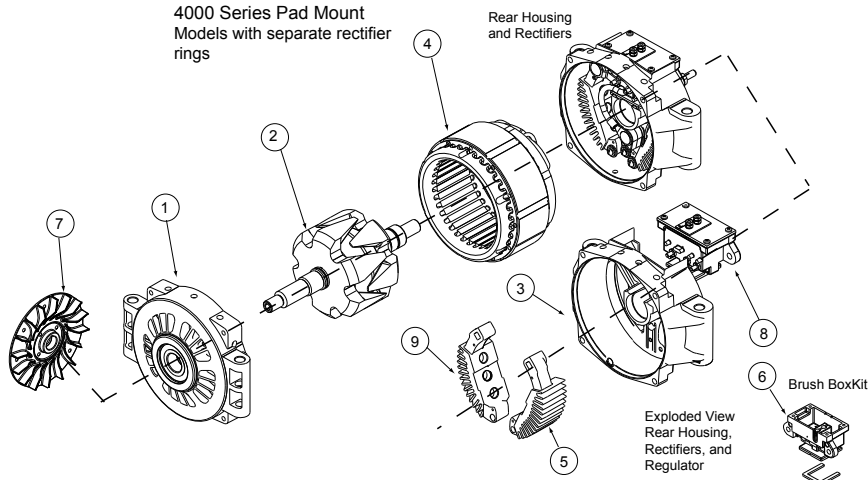
Group:	4000 Remote Rect-Reg	Notes:
Form:	SP1014-DWG	Refer to SP1014-4000-Remote-rect-reg for parts breakdown. Refer to TSB-3015 for hardware kit breakdown.
Date:	February 15, 2008	
File:	Alternator Parts List Section	

This service parts list covers alternators that are remote rectified and remote regulated models.

4000 Series J180 Mount  
Models with separate rectifier  
rings



4000 Series Pad Mount  
Models with separate rectifier  
rings



See TSB-3015  
for Hardware Kit  
breakdowns

**Important:** The information contained in this bulletin is intended for use by trained, professional technicians who have the proper tools, equipment, and training to perform the required maintenance described above. This information is NOT intended for 'do-it-yourselfers', and you should not assume that this information applies to your equipment. If you have any questions regarding this information please visit our website at [www.prestolite.com](http://www.prestolite.com), or contact our technical service department at: